

**Product Name: Dystrobrevin alpha Rabbit Monoclonal Antibody**  
**Catalog #: AMRe86914**

---

## Summary

<b>Production Name</b>	Dystrobrevin alpha Rabbit Monoclonal Antibody
<b>Description</b>	Rabbit Monoclonal antibody
<b>Host</b>	Rabbit
<b>Application</b>	WB, IHC-P, ICC/IF, FC
<b>Reactivity</b>	Human,Mouse,Rat

## Performance

<b>Conjugation</b>	Unconjugated
<b>Modification</b>	Unmodified
<b>Isotype</b>	IgG
<b>Clonality</b>	Monoclonal
<b>Form</b>	Liquid
<b>Storage</b>	Store at 4°C short term. Aliquot and store at -20°C long term. Avoid freeze/thaw cycles.
<b>Buffer</b>	Supplied in 50mM Tris-Glycine(pH 7.4), 0.15M NaCl, 40% Glycerol, 0.01% sodium azide and 0.05% BSA. Stable for 12 months from date of receipt.
<b>Purification</b>	Affinity Purification

## Immunogen

<b>Gene Name</b>	Dystrobrevin alpha
<b>Alternative Names</b>	DTN; DRP3; DTN-A; LVNC1; D18S892E
<b>Gene ID</b>	1837
<b>SwissProt ID</b>	Q9Y4J8.

## Application

<b>Dilution Ratio</b>	WB: 1:1000-1:5000 IHC-P: 1:100 ICC/IF: 1:100-1:200 FC: 1:100
<b>Molecular Weight</b>	Calculated MW:84 kDa; Observed MW:84 kDa

**Product Name: Dystrobrevin alpha Rabbit Monoclonal Antibody**  
**Catalog #: AMRe86914**

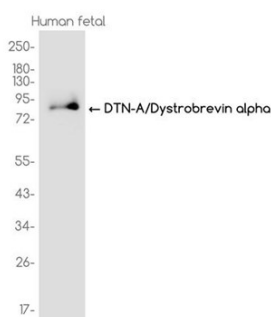


## Background

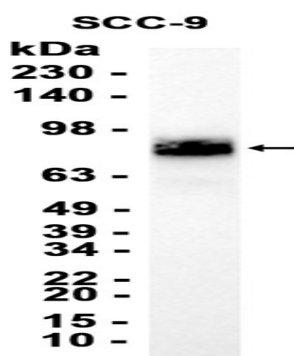
The protein encoded by this gene belongs to the dystrobrevin subfamily of the dystrophin family. This protein is a component of the dystrophin-associated protein complex (DPC), which consists of dystrophin and several integral and peripheral membrane proteins, including dystroglycans, sarcoglycans, syntrophins and alpha- and beta-dystrobrevin. The DPC localizes to the sarcolemma and its disruption is associated with various forms of muscular dystrophy. Mutations in this gene are associated with left ventricular noncompaction with congenital heart defects. Multiple alternatively spliced transcript variants encoding different isoforms have been identified for this gene. [provided by RefSeq, Jul 2008]

## Research Area

## Image Data



Western blot analysis of extracts from Human fetal tissue using AMRe86914 at 1:1000.



Western blot analysis of extracts from SCC-9 cells using AMRe86914 at 1:3000.

## Note

For research use only.