

Product Name: Angiotensinogen Rabbit Monoclonal Antibody
Catalog #: AMRe86909



Summary

Production Name	Angiotensinogen Rabbit Monoclonal Antibody
Description	Rabbit Monoclonal antibody
Host	Rabbit
Application	WB, IP
Reactivity	Human,Mouse,Rat

Performance

Conjugation	Unconjugated
Modification	Unmodified
Isotype	IgG
Clonality	Monoclonal
Form	Liquid
Storage	Store at 4°C short term. Aliquot and store at -20°C long term. Avoid freeze/thaw cycles.
Buffer	Supplied in 50mM Tris-Glycine(pH 7.4), 0.15M NaCl, 40% Glycerol, 0.01% sodium azide and 0.05% BSA. Stable for 12 months from date of receipt.
Purification	Affinity Purification

Immunogen

Gene Name	Angiotensinogen
Alternative Names	AGT;ANHU; hFLT1; SERPINA8
Gene ID	183
SwissProt ID	P01019.

Application

Dilution Ratio	WB: 1:1000 IP: 1:20-1:50
Molecular Weight	Calculated MW:52 kDa; Observed MW:52 kDa

Product Name: Angiotensinogen Rabbit Monoclonal Antibody
Catalog #: AMRe86909

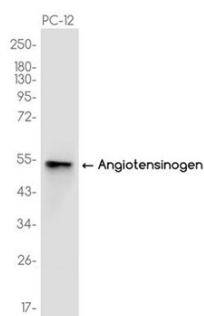


Background

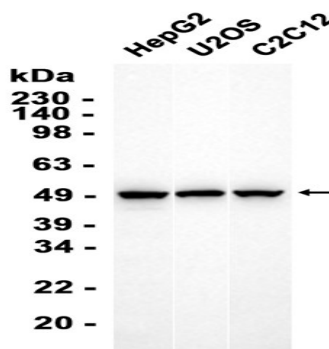
The protein encoded by this gene, pre-angiotensinogen or angiotensinogen precursor, is expressed in the liver and is cleaved by the enzyme renin in response to lowered blood pressure. The resulting product, angiotensin I, is then cleaved by angiotensin converting enzyme (ACE) to generate the physiologically active enzyme angiotensin II. The protein is involved in maintaining blood pressure and in the pathogenesis of essential hypertension and preeclampsia. Mutations in this gene are associated with susceptibility to essential hypertension, and can cause renal tubular dysgenesis, a severe disorder of renal tubular development. Defects in this gene have also been associated with non-familial structural atrial fibrillation, and inflammatory bowel disease. [provided by RefSeq, Jul 2008]

Research Area

Image Data



Western blot analysis of extracts from PC-12 cells using AMRe86909 at 1:1000.



Western blot analysis of extracts from HepG2,U2OS,C2C12 cells using AMRe86909 at 1:1000.

Note

For research use only.

**Product Name: Angiotensinogen Rabbit Monoclonal
Antibody**
Catalog #: AMRe86909

