

Product Name: SHC Rabbit Monoclonal Antibody
Catalog #: AMRe86908



Summary

Production Name	SHC Rabbit Monoclonal Antibody
Description	Rabbit Monoclonal antibody
Host	Rabbit
Application	WB, IHC-P
Reactivity	Human,Mouse,Rat

Performance

Conjugation	Unconjugated
Modification	Unmodified
Isotype	IgG
Clonality	Monoclonal
Form	Liquid
Storage	Store at 4°C short term. Aliquot and store at -20°C long term. Avoid freeze/thaw cycles.
Buffer	Supplied in 50mM Tris-Glycine(pH 7.4), 0.15M NaCl, 40% Glycerol, 0.01% sodium azide and 0.05% BSA. Stable for 12 months from date of receipt.
Purification	Affinity Purification

Immunogen

Gene Name	SHC
Alternative Names	SHC; SHCA
Gene ID	6464
SwissProt ID	P29353.

Application

Dilution Ratio	WB: 1:1000 IHC-P: 1:100-1:200
Molecular Weight	Calculated MW:63 kDa; Observed MW:46,52,66 kDa

Background

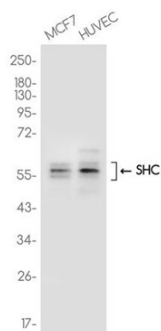
Product Name: SHC Rabbit Monoclonal Antibody
Catalog #: AMRe86908



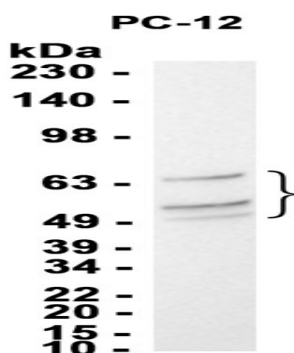
This gene encodes three main isoforms that differ in activities and subcellular location. While all three are adapter proteins in signal transduction pathways, the longest (p66Shc) may be involved in regulating life span and the effects of reactive oxygen species. The other two isoforms, p52Shc and p46Shc, link activated receptor tyrosine kinases to the Ras pathway by recruitment of the GRB2/SOS complex. p66Shc is not involved in Ras activation. Unlike the other two isoforms, p46Shc is targeted to the mitochondrial matrix. Several transcript variants encoding different isoforms have been found for this gene. [provided by RefSeq, Feb 2011]

Research Area

Image Data



Western blot analysis of extracts from MCF-7, HUVEC cells using AMRe86908 at 1:1000.



Western blot analysis of extracts from PC-12 cells using AMRe86908 at 1:1000.

Note

For research use only.