

**Product Name: FBP1 Rabbit Monoclonal Antibody**  
**Catalog #: AMRe86906**



## Summary

<b>Production Name</b>	FBP1 Rabbit Monoclonal Antibody
<b>Description</b>	Rabbit Monoclonal antibody
<b>Host</b>	Rabbit
<b>Application</b>	WB, ICC/IF, FC
<b>Reactivity</b>	Human, Mouse, Rat

## Performance

<b>Conjugation</b>	Unconjugated
<b>Modification</b>	Unmodified
<b>Isotype</b>	IgG
<b>Clonality</b>	Monoclonal
<b>Form</b>	Liquid
<b>Storage</b>	Store at 4°C short term. Aliquot and store at -20°C long term. Avoid freeze/thaw cycles.
<b>Buffer</b>	Supplied in 50mM Tris-Glycine(pH 7.4), 0.15M NaCl, 40% Glycerol, 0.01% sodium azide and 0.05% BSA. Stable for 12 months from date of receipt.
<b>Purification</b>	Affinity Purification

## Immunogen

<b>Gene Name</b>	FBP1
<b>Alternative Names</b>	FBP
<b>Gene ID</b>	2203
<b>SwissProt ID</b>	P09467.

## Application

<b>Dilution Ratio</b>	WB: 1:1000-1:5000 ICC/IF: 1:50 FC: 1:200
<b>Molecular Weight</b>	Calculated MW:37 kDa; Observed MW:37 kDa

## Background

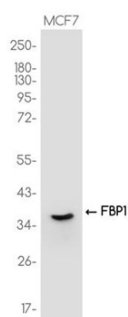
**Product Name: FBP1 Rabbit Monoclonal Antibody**  
**Catalog #: AMRe86906**



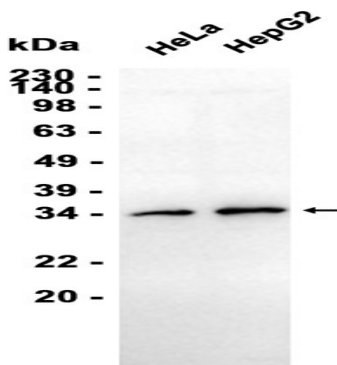
Fructose-1,6-bisphosphatase 1, a gluconeogenesis regulatory enzyme, catalyzes the hydrolysis of fructose 1,6-bisphosphate to fructose 6-phosphate and inorganic phosphate. Fructose-1,6-diphosphatase deficiency is associated with hypoglycemia and metabolic acidosis. [provided by RefSeq, Jul 2008]

## Research Area

## Image Data



Western blot analysis of extracts from MCF-7 cells using AMRe86906 at 1:1000.



Western blot analysis of extracts from HeLa, HepG2 cells using AMRe86906 at 1:3000.

## Note

For research use only.