

Product Name: Tmem27 Rabbit Monoclonal Antibody
Catalog #: AMRe86905



Summary

Production Name	Tmem27 Rabbit Monoclonal Antibody
Description	Rabbit Monoclonal antibody
Host	Rabbit
Application	WB, IHC-P, ICC/IF, FC
Reactivity	Human,Mouse,Rat

Performance

Conjugation	Unconjugated
Modification	Unmodified
Isotype	IgG
Clonality	Monoclonal
Form	Liquid
Storage	Store at 4°C short term. Aliquot and store at -20°C long term. Avoid freeze/thaw cycles.
Buffer	Supplied in 50mM Tris-Glycine(pH 7.4), 0.15M NaCl, 40% Glycerol, 0.01% sodium azide and 0.05% BSA. Stable for 12 months from date of receipt.
Purification	Affinity Purification

Immunogen

Gene Name	Tmem27
Alternative Names	NX17; NX-17
Gene ID	57393
SwissProt ID	Q9HBJ8.

Application

Dilution Ratio	WB: 1:1000 IHC-P: 1:1000-1:10000 ICC/IF: 1:200-1:500 FC: 1:100
Molecular Weight	Calculated MW:25 kDa; Observed MW:43 kDa

Background

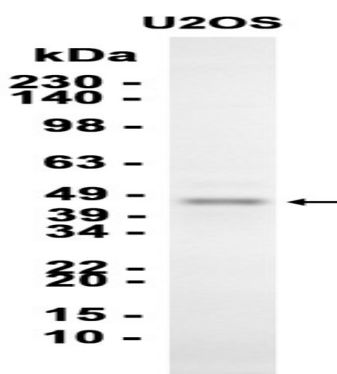
Product Name: Tmem27 Rabbit Monoclonal Antibody
Catalog #: AMRe86905



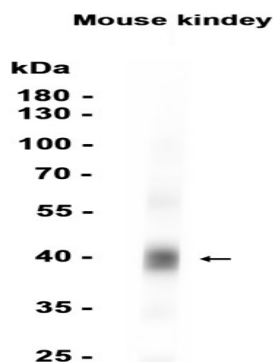
This gene encodes a type 1 transmembrane protein that is important for trafficking amino acid transporters to the apical brush border of proximal tubules. The encoded protein binds to amino acid transporters and regulates their expression on the plasma membrane. It also plays a role in controlling insulin exocytosis by regulating formation of the SNARE (soluble N-ethylmaleimide-sensitive-factor attachment protein receptor) complex in pancreatic beta cells. The extracellular domain of the encoded protein may be cleaved and shed from the plasma membrane specifically in pancreatic beta cells. [provided by RefSeq, Jun 2013]

Research Area

Image Data



Western blot analysis of extracts from U2OS cells using AMRe86905 at 1:1000.



Western blot analysis of extracts from Mouse kidney tissue using AMRe86905 at 1:1000.

Note

For research use only.