

Product Name: Tin2 Rabbit Monoclonal Antibody
Catalog #: AMRe86896



Summary

Production Name	Tin2 Rabbit Monoclonal Antibody
Description	Rabbit Monoclonal antibody
Host	Rabbit
Application	WB
Reactivity	Human,Mouse,Rat

Performance

Conjugation	Unconjugated
Modification	Unmodified
Isotype	IgG
Clonality	Monoclonal
Form	Liquid
Storage	Store at 4°C short term. Aliquot and store at -20°C long term. Avoid freeze/thaw cycles.
Buffer	Supplied in 50mM Tris-Glycine(pH 7.4), 0.15M NaCl, 40% Glycerol, 0.01% sodium azide and 0.05% BSA. Stable for 12 months from date of receipt.
Purification	Affinity Purification

Immunogen

Gene Name	Tin2
Alternative Names	TIN2; DKCA3
Gene ID	26277
SwissProt ID	Q9BSI4.

Application

Dilution Ratio	WB: 1:1000
Molecular Weight	Calculated MW:50 kDa; Observed MW:39 kDa

Background

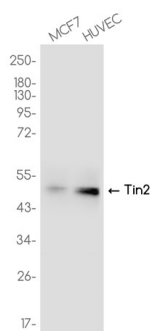
Product Name: Tin2 Rabbit Monoclonal Antibody
Catalog #: AMRe86896



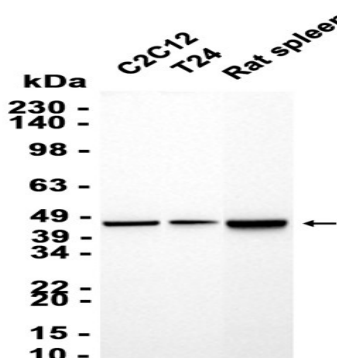
This gene encodes one of the proteins of the shelterin, or telosome, complex which protects telomeres by allowing the cell to distinguish between telomeres and regions of DNA damage. The protein encoded by this gene is a critical part of shelterin; it interacts with the three DNA-binding proteins of the shelterin complex, and it is important for assembly of the complex. Mutations in this gene cause dyskeratosis congenita (DKC), an inherited bone marrow failure syndrome. [provided by RefSeq, Mar 2010]

Research Area

Image Data



Western blot analysis of extracts from MCF-7, HUVEC cells using AMRe86896 at 1:1000.



Western blot analysis of extracts from C2C12, T24 cells and Rat spleen tissue using AMRe86896 at 1:1000.

Note

For research use only.