
Product Name: TBR1 Rabbit Monoclonal Antibody**Catalog #: AMRe86892**

For research use only.

Summary

Description	Recombinant rabbit monoclonal antibody
Host	Rabbit
Application	WB,IHC,ICC/IF
Reactivity	Human,Mouse,Rat
Conjugation	Unconjugated
Modification	Unmodified
Isotype	IgG
Clonality	Monoclonal
Form	Liquid
Concentration	0.15mg/ml. The concentration of this product may be batch-dependent.
Storage	Aliquot and store at -20°C (valid for 12 months). Avoid freeze/thaw cycles.
Shipping	Ice bags
Buffer	Supplied in 50mM Tris-Glycine(pH 7.4), 0.15M NaCl, 40% Glycerol, 0.01% sodium azide and 0.05% protective protein. Stable for 12 months from date of receipt.
Purification	Affinity Purification

Application

Dilution Ratio	WB 1:500-1:2000,IHC 1:5000-1:50000,ICC/IF 1:100-1:200
Molecular Weight	Calculated MW:74 kDa; Observed MW:74 kDa

Antigen Information

Gene Name	TBR1
Alternative Names	TBR-1; TES-56
Gene ID	10716
SwissProt ID	Q16650
Immunogen	A synthetic peptide of human TBR1

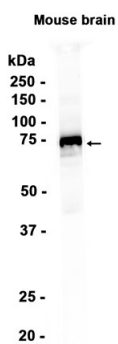
Background

This gene is a member of a conserved family of genes that share a common DNA-binding domain, the T-box. T-box genes encode transcription factors involved in the regulation of numerous developmental processes. In mouse, the ortholog of this

gene is expressed in the cerebral cortex, hippocampus, amygdala and olfactory bulb and is thought to play an important role in neuronal migration and axonal projection. In mouse, the C-terminal region of this protein was found to be necessary and sufficient for association with the guanylate kinase domain of calcium/calmodulin-dependent serine protein kinase. [provided by RefSeq, Dec 2015]

Research Area

Image Data



Western blot analysis of extracts from Mouse brain tissue using TBR1 Rabbit Monoclonal Antibody at 1:1000.