
Product Name: Natriuretic peptides A Rabbit Monoclonal Antibody**Catalog #: AMRe86884**

For research use only.

Summary

Description	Recombinant rabbit monoclonal antibody
Host	Rabbit
Application	WB,IHC,IP
Reactivity	Mouse,Rat
Conjugation	Unconjugated
Modification	Unmodified
Isotype	IgG
Clonality	Monoclonal
Form	Liquid
Concentration	
Storage	Aliquot and store at -20°C (valid for 12 months). Avoid freeze/thaw cycles.
Shipping	Ice bags
Buffer	Supplied in 50mM Tris-Glycine(pH 7.4), 0.15M NaCl, 40% Glycerol, 0.01% sodium azide and 0.05% protective protein. Stable for 12 months from date of receipt.
Purification	Affinity Purification

Application

Dilution Ratio	WB 1:500-1:2000,IHC 1:200-1:2000,IP 1:20-1:50
Molecular Weight	Calculated MW:17 kDa; Observed MW:17 kDa

Antigen Information

Gene Name	Natriuretic peptides A
Alternative Names	ANP; Anf; Pnd
Gene ID	230899
SwissProt ID	P05125
Immunogen	A synthetic peptide of mouse Natriuretic peptides A

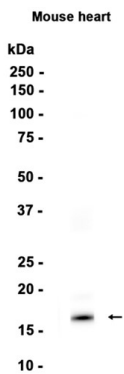
Background

This gene encodes members of the natriuretic family of peptides that play an important role in the control of extracellular fluid volume and electrolyte homeostasis. The encoded protein precursor undergoes proteolytic processing to generate multiple

functional peptides. Mice lacking the encoded peptides exhibit salt-sensitive hypertension. The transgenic overexpression of the encoded peptides in mice decreases arterial blood pressure without inducing diuresis and natriuresis. This gene is located adjacent to another member of the natriuretic family of peptides on chromosome 4. [provided by RefSeq, Oct 2015]

Research Area

Image Data



Western blot analysis of extracts from Mouse heart tissue using Natriuretic peptides A Rabbit Monoclonal Antibody at 1:1000.