
Product Name: CD26 Rabbit Monoclonal Antibody**Catalog #: AMRe86863**

For research use only.

Summary

| | |
|----------------------|--|
| Description | Recombinant rabbit monoclonal antibody |
| Host | Rabbit |
| Application | WB,ICC/IF,FC,IP |
| Reactivity | Mouse |
| Conjugation | Unconjugated |
| Modification | Unmodified |
| Isotype | IgG |
| Clonality | Monoclonal |
| Form | Liquid |
| Concentration | |
| Storage | Aliquot and store at -20°C (valid for 12 months). Avoid freeze/thaw cycles. |
| Shipping | Ice bags |
| Buffer | Supplied in 50mM Tris-Glycine(pH 7.4), 0.15M NaCl, 40% Glycerol, 0.01% sodium azide and 0.05% protective protein. Stable for 12 months from date of receipt. |
| Purification | Affinity Purification |

Application

| | |
|-------------------------|--|
| Dilution Ratio | WB 1:500-1:2000,ICC/IF 1:100-1:200,FC 1:200-1:500,IP 1:20-1:50 |
| Molecular Weight | Calculated MW:87 kDa; Observed MW:120 kDa |

Antigen Information

| | |
|--------------------------|-----------------------------------|
| Gene Name | CD26 |
| Alternative Names | Cd26; THAM; Dpp-4 |
| Gene ID | 13482 |
| SwissProt ID | P28843 |
| Immunogen | Recombinant protein of mouse CD26 |

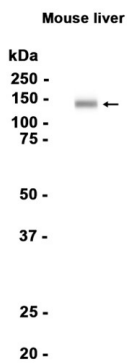
Background

Cell surface glycoprotein receptor involved in the costimulatory signal essential for T-cell receptor (TCR)-mediated T-cell activation. Acts as a positive regulator of T-cell coactivation, by binding at least ADA, CAV1, IGF2R, and PTPRC. Its binding to

CAV1 and CARD11 induces T-cell proliferation and NF-kappa-B activation in a T-cell receptor/CD3-dependent manner. Its interaction with ADA also regulates lymphocyte-epithelial cell adhesion. In association with FAP is involved in the pericellular proteolysis of the extracellular matrix (ECM), the migration and invasion of endothelial cells into the ECM.

Research Area

Image Data



Western blot analysis of extracts from Mouse liver tissue using CD26 Rabbit Monoclonal Antibody at 1:1000.