
Product Name: Caveolin-2 Rabbit Monoclonal Antibody**Catalog #: AMRe86858**

For research use only.

Summary

| | |
|----------------------|--|
| Description | Recombinant rabbit monoclonal antibody |
| Host | Rabbit |
| Application | WB,ICC/IF |
| Reactivity | Human,Mouse,Rat |
| Conjugation | Unconjugated |
| Modification | Unmodified |
| Isotype | IgG |
| Clonality | Monoclonal |
| Form | Liquid |
| Concentration | |
| Storage | Aliquot and store at -20°C (valid for 12 months). Avoid freeze/thaw cycles. |
| Shipping | Ice bags |
| Buffer | Supplied in 50mM Tris-Glycine(pH 7.4), 0.15M NaCl, 40% Glycerol, 0.01% sodium azide and 0.05% protective protein. Stable for 12 months from date of receipt. |
| Purification | Affinity Purification |

Application

| | |
|-------------------------|--|
| Dilution Ratio | WB 1:1000-1:5000,ICC/IF 1:20-1:50 |
| Molecular Weight | Calculated MW:18 kDa; Observed MW:18 kDa |

Antigen Information

| | |
|--------------------------|---|
| Gene Name | Caveolin-2 |
| Alternative Names | CAV |
| Gene ID | 858 |
| SwissProt ID | P51636 |
| Immunogen | A synthetic peptide of human Caveolin-2 |

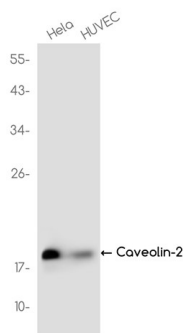
Background

The protein encoded by this gene is a major component of the inner surface of caveolae, small invaginations of the plasma membrane, and is involved in essential cellular functions, including signal transduction, lipid metabolism, cellular growth

control and apoptosis. This protein may function as a tumor suppressor. This gene and related family member (CAV1) are located next to each other on chromosome 7, and express colocalizing proteins that form a stable hetero-oligomeric complex. Alternatively spliced transcript variants encoding different isoforms have been identified for this gene. Additional isoforms resulting from the use of alternate in-frame translation initiation codons have also been described, and shown to have preferential localization in the cell (PMID:11238462). [provided by RefSeq, May 2011]

Research Area

Image Data



Western blot analysis of extracts from HeLa, HUVEC cells using Caveolin-2 Rabbit Monoclonal Antibody at 1:1000.