

Product Name: UBE2M Rabbit Monoclonal Antibody**Catalog #: AMRe86857**

For research use only.

Summary

Description	Recombinant rabbit monoclonal antibody
Host	Rabbit
Application	WB,IHC,ICC/IF,FC
Reactivity	Human,Mouse,Rat
Conjugation	Unconjugated
Modification	Unmodified
Isotype	IgG
Clonality	Monoclonal
Form	Liquid
Concentration	
Storage	Aliquot and store at -20°C (valid for 12 months). Avoid freeze/thaw cycles.
Shipping	Ice bags
Buffer	Supplied in 50mM Tris-Glycine(pH 7.4), 0.15M NaCl, 40% Glycerol, 0.01% sodium azide and 0.05% protective protein. Stable for 12 months from date of receipt.
Purification	Affinity Purification

Application

Dilution Ratio	WB 1:2000-1:20000,IHC 1:100-1:200,ICC/IF 1:100-1:200,FC 1:100-1:1000
Molecular Weight	Calculated MW:21 kDa; Observed MW:21 kDa

Antigen Information

Gene Name	UBE2M
Alternative Names	UBC12; hUbc12; UBC-RS2
Gene ID	9040
SwissProt ID	P61081
Immunogen	A synthetic peptide of human UBE2M

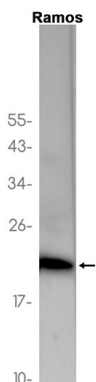
Background

The modification of proteins with ubiquitin is an important cellular mechanism for targeting abnormal or short-lived proteins for degradation. Ubiquitination involves at least three classes of enzymes: ubiquitin-activating enzymes, or E1s, ubiquitin-

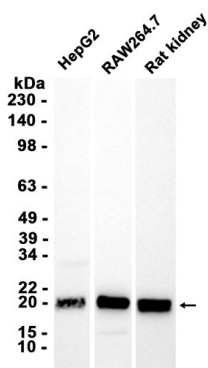
conjugating enzymes, or E2s, and ubiquitin-protein ligases, or E3s. This gene encodes a member of the E2 ubiquitin-conjugating enzyme family. The encoded protein is linked with a ubiquitin-like protein, NEDD8, which can be conjugated to cellular proteins, such as Cdc53/culin. [provided by RefSeq, Jul 2008]

Research Area

Image Data



Western blot analysis of extracts from Ramos cells using UBE2M Rabbit Monoclonal Antibody at 1:1000.



Western blot analysis of extracts from HepG2, RAW264.7 cells and Rat kidney tissue using AMRe86857 at 1:5000.