

**Product Name: LOX Rabbit Monoclonal Antibody****Catalog #: AMRe86854**

For research use only.

**Summary**

<b>Description</b>	Recombinant rabbit monoclonal antibody
<b>Host</b>	Rabbit
<b>Application</b>	WB,IHC,ICC/IF,FC,IP
<b>Reactivity</b>	Human,Mouse,Rat
<b>Conjugation</b>	Unconjugated
<b>Modification</b>	Unmodified
<b>Isotype</b>	IgG
<b>Clonality</b>	Monoclonal
<b>Form</b>	Liquid
<b>Concentration</b>	
<b>Storage</b>	Aliquot and store at -20°C (valid for 12 months). Avoid freeze/thaw cycles.
<b>Shipping</b>	Ice bags
<b>Buffer</b>	Supplied in 50mM Tris-Glycine(pH 7.4), 0.15M NaCl, 40% Glycerol, 0.01% sodium azide and 0.05% protective protein. Stable for 12 months from date of receipt.
<b>Purification</b>	Affinity Purification

**Application**

<b>Dilution Ratio</b>	WB 1:1000-1:5000,IHC 1:200-1:1000,ICC/IF 1:100-1:200,FC 1:50-1:200,IP 1:10-1:100
<b>Molecular Weight</b>	Calculated MW:47 kDa; Observed MW:54 kDa

**Antigen Information**

<b>Gene Name</b>	LOX
<b>Alternative Names</b>	AAT10
<b>Gene ID</b>	4015
<b>SwissProt ID</b>	P28300
<b>Immunogen</b>	A synthetic peptide of human LOX

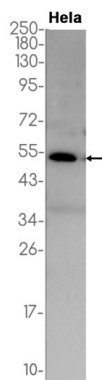
**Background**

This gene encodes a member of the lysyl oxidase family of proteins. Alternative splicing results in multiple transcript variants, at least one of which encodes a preproprotein that is proteolytically processed to generate a regulatory propeptide and the

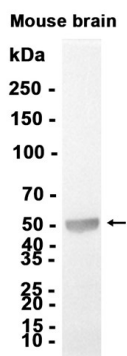
mature enzyme. The copper-dependent amine oxidase activity of this enzyme functions in the crosslinking of collagens and elastin, while the propeptide may play a role in tumor suppression. In addition, defects in this gene have been linked with predisposition to thoracic aortic aneurysms and dissections. [provided by RefSeq, Jul 2016]

## Research Area

## Image Data



Western blot analysis of extracts from HeLa cells using LOX Rabbit Monoclonal Antibody at 1:1000.



Western blot analysis of extracts from Mouse brain tissue using AMRe86854 at 1:2000.