

---

**Product Name: CD2 Rabbit Monoclonal Antibody****Catalog #: AMRe86852**

For research use only.

**Summary**

<b>Description</b>	Recombinant rabbit monoclonal antibody
<b>Host</b>	Rabbit
<b>Application</b>	WB,IHC,FC,IP
<b>Reactivity</b>	Mouse
<b>Conjugation</b>	Unconjugated
<b>Modification</b>	Unmodified
<b>Isotype</b>	IgG
<b>Clonality</b>	Monoclonal
<b>Form</b>	Liquid
<b>Concentration</b>	1.9mg/ml. The concentration of this product may be batch-dependent.
<b>Storage</b>	Aliquot and store at -20°C (valid for 12 months). Avoid freeze/thaw cycles.
<b>Shipping</b>	Ice bags
<b>Buffer</b>	Supplied in 50mM Tris-Glycine(pH 7.4), 0.15M NaCl, 40% Glycerol, 0.01% sodium azide and 0.05% protective protein. Stable for 12 months from date of receipt.
<b>Purification</b>	Affinity Purification

**Application**

<b>Dilution Ratio</b>	WB 1:500-1:2000,IHC 1:200-1:2000,FC 1:200-1:500,IP 1:20-1:50
<b>Molecular Weight</b>	Calculated MW:38 kDa; Observed MW:48-65 kDa

**Antigen Information**

<b>Gene Name</b>	CD2
<b>Alternative Names</b>	Ly37; LFA-2; Ly-37
<b>Gene ID</b>	12481
<b>SwissProt ID</b>	P08920
<b>Immunogen</b>	Recombinant protein of mouse CD2

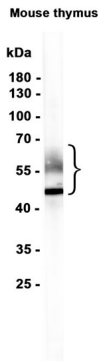
**Background**

CD2 interacts with lymphocyte function-associated antigen CD58 (LFA-3) and CD48/BCM1 to mediate adhesion between T-cells and other cell types. CD2 is implicated in the triggering of T-cells, the cytoplasmic domain is implicated in the signaling

function.

## Research Area

## Image Data



Western blot analysis of extracts from Mouse thymus tissue using CD2 Rabbit Monoclonal Antibody at 1:1000.