
Product Name: CD8 alpha Rabbit Monoclonal Antibody**Catalog #: AMRe86842**

For research use only.

Summary

Description	Recombinant rabbit monoclonal antibody
Host	Rabbit
Application	WB,IHC,FC,IP
Reactivity	Mouse
Conjugation	Unconjugated
Modification	Unmodified
Isotype	IgG
Clonality	Monoclonal
Form	Liquid
Concentration	1mg/ml. The concentration of this product may be batch-dependent.
Storage	Aliquot and store at -20°C (valid for 12 months). Avoid freeze/thaw cycles.
Shipping	Ice bags
Buffer	Supplied in 50mM Tris-Glycine(pH 7.4), 0.15M NaCl, 40% Glycerol, 0.01% sodium azide and 0.05% protective protein. Stable for 12 months from date of receipt.
Purification	Affinity Purification

Application

Dilution Ratio	WB 1:500-1:2000,IHC 1:200-1:2000,FC 1:200-1:500,IP 1:20-1:50
Molecular Weight	Calculated MW:28 kDa; Observed MW:35-42 kDa

Antigen Information

Gene Name	CD8 alpha
Alternative Names	Ly-2; Ly-B; Ly-35; Lyt-2; BB154331
Gene ID	12525
SwissProt ID	P01731
Immunogen	Recombinant protein of mouse CD8 alpha

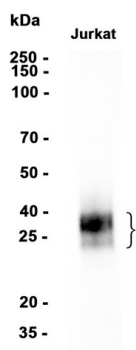
Background

Integral membrane glycoprotein that plays an essential role in the immune response and serves multiple functions in responses against both external and internal offenses. In T-cells, functions primarily as a coreceptor for MHC class I molecule:peptide

complex. The antigens presented by class I peptides are derived from cytosolic proteins while class II derived from extracellular proteins. Interacts simultaneously with the T-cell receptor (TCR) and the MHC class I proteins presented by antigen presenting cells (APCs). In turn, recruits the Src kinase LCK to the vicinity of the TCR-CD3 complex.

Research Area

Image Data



Western blot analysis of extracts from Jurkat cells using CD8 alpha Rabbit Monoclonal Antibody at 1:1000.