

Product Name: CD26 Rabbit Monoclonal Antibody**Catalog #: AMRe86841**

For research use only.

Summary

Description	Recombinant rabbit monoclonal antibody
Host	Rabbit
Application	WB,IHC
Reactivity	Human
Conjugation	Unconjugated
Modification	Unmodified
Isotype	IgG
Clonality	Monoclonal
Form	Liquid
Concentration	
Storage	Aliquot and store at -20°C (valid for 12 months). Avoid freeze/thaw cycles.
Shipping	Ice bags
Buffer	Supplied in 50mM Tris-Glycine(pH 7.4), 0.15M NaCl, 40% Glycerol, 0.01% sodium azide and 0.05% protective protein. Stable for 12 months from date of receipt.
Purification	Affinity Purification

Application

Dilution Ratio	WB 1:500-1:2000,IHC 1:200-1:1000
Molecular Weight	Calculated MW:88 kDa; Observed MW:120 kDa

Antigen Information

Gene Name	CD26
Alternative Names	CD26; ADABP; ADCP2; DPPIV; TP103
Gene ID	1803
SwissProt ID	P27487
Immunogen	A synthetic peptide of human CD26

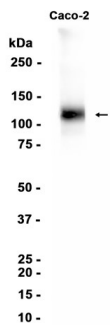
Background

The protein encoded by this gene is identical to adenosine deaminase complexing protein-2, and to the T-cell activation antigen CD26. It is an intrinsic membrane glycoprotein and a serine exopeptidase that cleaves X-proline dipeptides from the N-

terminus of polypeptides. [provided by RefSeq, Jul 2008]

Research Area

Image Data



Western blot analysis of extracts from Caco-2 cells using CD26 Rabbit Monoclonal Antibody at 1:1000.