
Product Name: SMYD1 Rabbit Monoclonal Antibody**Catalog #: AMRe86829**

For research use only.

Summary

Description	Recombinant rabbit monoclonal antibody
Host	Rabbit
Application	WB,IHC,IP
Reactivity	Human,Mouse,Rat
Conjugation	Unconjugated
Modification	Unmodified
Isotype	IgG
Clonality	Monoclonal
Form	Liquid
Concentration	
Storage	Aliquot and store at -20°C (valid for 12 months). Avoid freeze/thaw cycles.
Shipping	Ice bags
Buffer	Supplied in 50mM Tris-Glycine(pH 7.4), 0.15M NaCl, 40% Glycerol, 0.01% sodium azide and 0.05% protective protein. Stable for 12 months from date of receipt.
Purification	Affinity Purification

Application

Dilution Ratio	WB 1:1000-1:5000,IHC 1:100-1:200,IP 1:10-1:100
Molecular Weight	Calculated MW:57 kDa; Observed MW:57 kDa

Antigen Information

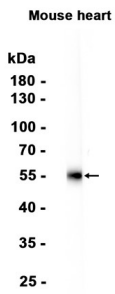
Gene Name	SMYD1
Alternative Names	BOP; KMT3D; ZMYND18; ZMYND22
Gene ID	150572
SwissProt ID	Q8NB12
Immunogen	A synthetic peptide of human SMYD1

Background

Methylates histone H3 at 'Lys-4' (H3K4me), seems able to perform both mono-, di-, and trimethylation. Acts as a transcriptional repressor. Essential for cardiomyocyte differentiation and cardiac morphogenesis.

Research Area

Image Data



Western blot analysis of extracts from Mouse heart tissue using SMYD1 Rabbit Monoclonal Antibody at 1:1000.