
Product Name: Apolipoprotein E Rabbit Monoclonal Antibody**Catalog #: AMRe86823**

For research use only.

Summary

Description	Recombinant rabbit monoclonal antibody
Host	Rabbit
Application	WB,IHC,ICC/IF,FC,IP
Reactivity	Human,Mouse,Rat
Conjugation	Unconjugated
Modification	Unmodified
Isotype	IgG
Clonality	Monoclonal
Form	Liquid
Concentration	0.1mg/ml. The concentration of this product may be batch-dependent.
Storage	Aliquot and store at -20°C (valid for 12 months). Avoid freeze/thaw cycles.
Shipping	Ice bags
Buffer	Supplied in 50mM Tris-Glycine(pH 7.4), 0.15M NaCl, 40% Glycerol, 0.01% sodium azide and 0.05% protective protein. Stable for 12 months from date of receipt.
Purification	Affinity Purification

Application

Dilution Ratio	WB 1:500-1:2000,IHC 1:500-1:5000,ICC/IF 1:200-1:500,FC 1:50-1:100,IP 1:20-1:50
Molecular Weight	Calculated MW:36 kDa; Observed MW:36 kDa

Antigen Information

Gene Name	Apolipoprotein E
Alternative Names	AD2; LPG; APO-E; ApoE4; LDLCO5
Gene ID	348
SwissProt ID	P08226
Immunogen	A synthetic peptide of mouse Apolipoprotein E

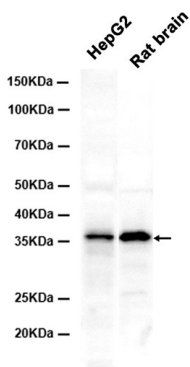
Background

The protein encoded by this gene is a major apoprotein of the chylomicron. It binds to a specific liver and peripheral cell receptor, and is essential for the normal catabolism of triglyceride-rich lipoprotein constituents. This gene maps to

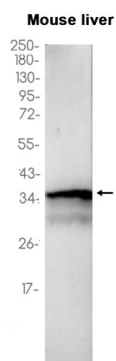
chromosome 19 in a cluster with the related apolipoprotein C1 and C2 genes. Mutations in this gene result in familial dysbetalipoproteinemia, or type III hyperlipoproteinemia (HLP III), in which increased plasma cholesterol and triglycerides are the consequence of impaired clearance of chylomicron and VLDL remnants. [provided by RefSeq, Jun 2016]

Research Area

Image Data



Western blot analysis of extracts from HepG2 cells and Rat brain tissue using Apolipoprotein E Rabbit Monoclonal Antibody at 1:1000.



Western blot analysis of extracts from Mouse liver tissue using AMRe86823 at 1:1000.