
Product Name: DPP6 Rabbit Monoclonal Antibody**Catalog #: AMRe86814**

For research use only.

Summary

Description	Recombinant rabbit monoclonal antibody
Host	Rabbit
Application	WB,IHC
Reactivity	Human,Mouse,Rat
Conjugation	Unconjugated
Modification	Unmodified
Isotype	IgG
Clonality	Monoclonal
Form	Liquid
Concentration	
Storage	Aliquot and store at -20°C (valid for 12 months). Avoid freeze/thaw cycles.
Shipping	Ice bags
Buffer	Supplied in 50mM Tris-Glycine(pH 7.4), 0.15M NaCl, 40% Glycerol, 0.01% sodium azide and 0.05% protective protein. Stable for 12 months from date of receipt.
Purification	Affinity Purification

Application

Dilution Ratio	WB 1:500-1:2000,IHC 1:200-1:500
Molecular Weight	Calculated MW:98 kDa; Observed MW:110 kDa

Antigen Information

Gene Name	DPP6
Alternative Names	VF2; DPL1; DPPX; MRD33
Gene ID	1804
SwissProt ID	P42658
Immunogen	Recombinant protein of human DPP6

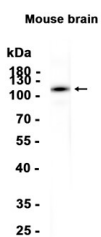
Background

This gene encodes a single-pass type II membrane protein that is a member of the peptidase S9B family of serine proteases. This protein has no detectable protease activity, most likely due to the absence of the conserved serine residue normally

present in the catalytic domain of serine proteases. However, it does bind specific voltage-gated potassium channels and alters their expression and biophysical properties. Variations in this gene may be associated with susceptibility to amyotrophic lateral sclerosis and with idiopathic ventricular fibrillation. Alternative splicing results in multiple transcript variants. [provided by RefSeq, Mar 2014]

Research Area

Image Data



Western blot analysis of extracts from Mouse brain tissue using DPP6 Rabbit Monoclonal Antibody at 1:1000.