

Product Name: CXCL15 Rabbit Monoclonal Antibody**Catalog #: AMRe86812**

For research use only.

Summary

Description	Recombinant rabbit monoclonal antibody
Host	Rabbit
Application	WB
Reactivity	Mouse
Conjugation	Unconjugated
Modification	Unmodified
Isotype	IgG
Clonality	Monoclonal
Form	Liquid
Concentration	
Storage	Aliquot and store at -20°C (valid for 12 months). Avoid freeze/thaw cycles.
Shipping	Ice bags
Buffer	Supplied in 50mM Tris-Glycine(pH 7.4), 0.15M NaCl, 40% Glycerol, 0.01% sodium azide and 0.05% protective protein. Stable for 12 months from date of receipt.
Purification	Affinity Purification

Application

Dilution Ratio	WB 1:500-1:2000
Molecular Weight	Calculated MW:19 kDa; Observed MW:19 kDa

Antigen Information

Gene Name	CXCL15
Alternative Names	Il8; weche; Scyb15; lungkine
Gene ID	20309
SwissProt ID	Q9WVL7
Immunogen	A synthetic peptide of mouse CXCL15

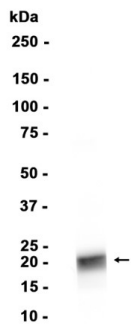
Background

Chemotactic for neutrophils. Involved in lung-specific neutrophil trafficking during normal and inflammatory conditions.

Research Area

Image Data

Mouse lung



Western blot analysis of extracts from Mouse lung tissue using CXCL15 Rabbit Monoclonal Antibody at 1:1000.