
Product Name: RHOD Rabbit Monoclonal Antibody**Catalog #: AMRe86811**

For research use only.

Summary

Description	Recombinant rabbit monoclonal antibody
Host	Rabbit
Application	WB
Reactivity	Human, Mouse, Rat
Conjugation	Unconjugated
Modification	Unmodified
Isotype	IgG
Clonality	Monoclonal
Form	Liquid
Concentration	
Storage	Aliquot and store at -20°C (valid for 12 months). Avoid freeze/thaw cycles.
Shipping	Ice bags
Buffer	Supplied in 50mM Tris-Glycine(pH 7.4), 0.15M NaCl, 40% Glycerol, 0.01% sodium azide and 0.05% protective protein. Stable for 12 months from date of receipt.
Purification	Affinity Purification

Application

Dilution Ratio	WB 1:500-1:2000
Molecular Weight	Calculated MW:23 kDa; Observed MW:23 kDa

Antigen Information

Gene Name	RHOD
Alternative Names	Rho; ARHD; RHOM; RHOHP1
Gene ID	29984
SwissProt ID	O00212
Immunogen	A synthetic peptide of human RHOD

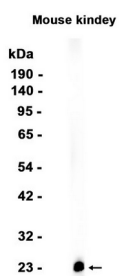
Background

Ras homolog, or Rho, proteins interact with protein kinases and may serve as targets for activated GTPase. They play a critical role in muscle differentiation. The protein encoded by this gene binds GTP and is a member of the small GTPase superfamily. It

is involved in endosome dynamics and reorganization of the actin cytoskeleton, and it may coordinate membrane transport with the function of the cytoskeleton. Two transcript variants encoding different isoforms have been found for this gene. [provided by RefSeq, Jul 2014]

Research Area

Image Data



Western blot analysis of extracts from Mouse kidney tissue using RHOD Rabbit Monoclonal Antibody at 1:1000.