
Product Name: Plasminogen Rabbit Monoclonal Antibody**Catalog #: AMRe86806**

For research use only.

Summary

Description	Recombinant rabbit monoclonal antibody
Host	Rabbit
Application	WB
Reactivity	Human
Conjugation	Unconjugated
Modification	Unmodified
Isotype	IgG
Clonality	Monoclonal
Form	Liquid
Concentration	
Storage	Aliquot and store at -20°C (valid for 12 months). Avoid freeze/thaw cycles.
Shipping	Ice bags
Buffer	Supplied in 50mM Tris-Glycine(pH 7.4), 0.15M NaCl, 40% Glycerol, 0.01% sodium azide and 0.05% protective protein. Stable for 12 months from date of receipt.
Purification	Affinity Purification

Application

Dilution Ratio	WB 1:1000-1:5000
Molecular Weight	Calculated MW:91 kDa; Observed MW:91 kDa

Antigen Information

Gene Name	Plasminogen
Alternative Names	PLG
Gene ID	5340
SwissProt ID	P00747
Immunogen	A synthetic peptide of human Plasminogen

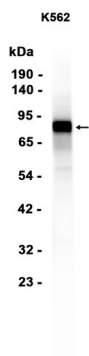
Background

The protein encoded by this gene is a secreted blood zymogen that is activated by proteolysis and converted to plasmin and angiostatin. Plasmin dissolves fibrin in blood clots and is an important protease in many other cellular processes while

angiostatin inhibits angiogenesis. Defects in this gene are likely a cause of thrombophilia and ligneous conjunctivitis. Two transcript variants encoding different isoforms have been found for this gene.[provided by RefSeq, Dec 2009]

Research Area

Image Data



Western blot analysis of extracts from K562 cells using Plasminogen Rabbit Monoclonal Antibody at 1:1000.