
Product Name: Zic1 Rabbit Monoclonal Antibody**Catalog #: AMRe86805**

For research use only.

Summary

Description	Recombinant rabbit monoclonal antibody
Host	Rabbit
Application	WB,ICC/IF,FC
Reactivity	Human
Conjugation	Unconjugated
Modification	Unmodified
Isotype	IgG
Clonality	Monoclonal
Form	Liquid
Concentration	
Storage	Aliquot and store at -20°C (valid for 12 months). Avoid freeze/thaw cycles.
Shipping	Ice bags
Buffer	Supplied in 50mM Tris-Glycine(pH 7.4), 0.15M NaCl, 40% Glycerol, 0.01% sodium azide and 0.05% protective protein. Stable for 12 months from date of receipt.
Purification	Affinity Purification

Application

Dilution Ratio	WB 1:1000-1:5000,ICC/IF 1:100-1:200,FC 1:50-1:100
Molecular Weight	Calculated MW:48 kDa; Observed MW:48 kDa

Antigen Information

Gene Name	Zic1
Alternative Names	ZIC; CRS6; ZNF201
Gene ID	7545
SwissProt ID	Q15915
Immunogen	A synthetic peptide of human Zic1

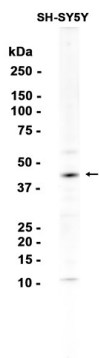
Background

This gene encodes a member of the ZIC family of C2H2-type zinc finger proteins. Members of this family are important during development. Aberrant expression of this gene is seen in medulloblastoma, a childhood brain tumor. This gene is closely linked

to the gene encoding zinc finger protein of the cerebellum 4, a related family member on chromosome 3. This gene encodes a transcription factor that can bind and transactivate the apolipoprotein E gene. [provided by RefSeq, Jul 2008]

Research Area

Image Data



Western blot analysis of extracts from SH-SY5Y cells using Zic1 Rabbit Monoclonal Antibody at 1:1000.