
Product Name: Prostaglandin dehydrogenase 1 Rabbit Monoclonal Antibody**Catalog #: AMRe86796**

For research use only.

Summary

Description	Recombinant rabbit monoclonal antibody
Host	Rabbit
Application	WB
Reactivity	Human, Mouse, Rat
Conjugation	Unconjugated
Modification	Unmodified
Isotype	IgG
Clonality	Monoclonal
Form	Liquid
Concentration	
Storage	Aliquot and store at -20°C (valid for 12 months). Avoid freeze/thaw cycles.
Shipping	Ice bags
Buffer	Supplied in 50mM Tris-Glycine(pH 7.4), 0.15M NaCl, 40% Glycerol, 0.01% sodium azide and 0.05% protective protein. Stable for 12 months from date of receipt.
Purification	Affinity Purification

Application

Dilution Ratio	WB 1:500-1:2000
Molecular Weight	Calculated MW:29 kDa; Observed MW:29 kDa

Antigen Information

Gene Name	Prostaglandin dehydrogenase 1
Alternative Names	PGDH; PGDH1; PHOAR1; 15-PGDH; SDR36C1
Gene ID	3248
SwissProt ID	P15428
Immunogen	Recombinant protein of human Prostaglandin dehydrogenase 1

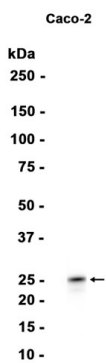
Background

This gene encodes a member of the short-chain nonmetalloenzyme alcohol dehydrogenase protein family. The encoded enzyme is responsible for the metabolism of prostaglandins, which function in a variety of physiologic and cellular processes

such as inflammation. Mutations in this gene result in primary autosomal recessive hypertrophic osteoarthropathy and craniosteoarthropathy. Multiple transcript variants encoding different isoforms have been found for this gene. [provided by RefSeq, Mar 2009]

Research Area

Image Data



Western blot analysis of extracts from Caco-2 cells using Prostaglandin dehydrogenase 1 Rabbit Monoclonal Antibody at 1:1000.