
Product Name: EGR2 Rabbit Monoclonal Antibody**Catalog #: AMRe86787**

For research use only.

Summary

Description	Recombinant rabbit monoclonal antibody
Host	Rabbit
Application	WB
Reactivity	Human, Mouse, Rat
Conjugation	Unconjugated
Modification	Unmodified
Isotype	IgG
Clonality	Monoclonal
Form	Liquid
Concentration	
Storage	Aliquot and store at -20°C (valid for 12 months). Avoid freeze/thaw cycles.
Shipping	Ice bags
Buffer	Supplied in 50mM Tris-Glycine(pH 7.4), 0.15M NaCl, 40% Glycerol, 0.01% sodium azide and 0.05% protective protein. Stable for 12 months from date of receipt.
Purification	Affinity Purification

Application

Dilution Ratio	WB 1:1000-1:5000
Molecular Weight	Calculated MW:50 kDa; Observed MW:50 kDa

Antigen Information

Gene Name	EGR2
Alternative Names	AT591; CMT1D; CMT4E; KROX20
Gene ID	1959
SwissProt ID	P11161
Immunogen	A synthetic peptide of human EGR2

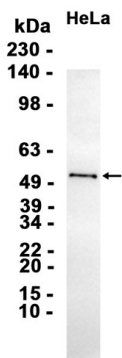
Background

The protein encoded by this gene is a transcription factor with three tandem C2H2-type zinc fingers. Defects in this gene are associated with Charcot-Marie-Tooth disease type 1D (CMT1D), Charcot-Marie-Tooth disease type 4E (CMT4E), and with

Dejerine-Sottas syndrome (DSS). Multiple transcript variants encoding two different isoforms have been found for this gene.
[provided by RefSeq, Oct 2008]

Research Area

Image Data



Western blot analysis of extracts from HeLa cells using EGR2 Rabbit Monoclonal Antibody at 1:2000.