

---

**Product Name: AMCase Rabbit Monoclonal Antibody****Catalog #: AMRe86784**

For research use only.

**Summary**

<b>Description</b>	Recombinant rabbit monoclonal antibody
<b>Host</b>	Rabbit
<b>Application</b>	WB,IHC
<b>Reactivity</b>	Mouse
<b>Conjugation</b>	Unconjugated
<b>Modification</b>	Unmodified
<b>Isotype</b>	IgG
<b>Clonality</b>	Monoclonal
<b>Form</b>	Liquid
<b>Concentration</b>	0.09mg/ml. The concentration of this product may be batch-dependent.
<b>Storage</b>	Aliquot and store at -20°C (valid for 12 months). Avoid freeze/thaw cycles.
<b>Shipping</b>	Ice bags
<b>Buffer</b>	Supplied in 50mM Tris-Glycine(pH 7.4), 0.15M NaCl, 40% Glycerol, 0.01% sodium azide and 0.05% protective protein. Stable for 12 months from date of receipt.
<b>Purification</b>	Affinity Purification

**Application**

<b>Dilution Ratio</b>	WB 1:500-1:2000,IHC 1:1000-1:5000
<b>Molecular Weight</b>	Calculated MW:52 kDa; Observed MW:52 kDa

**Antigen Information**

<b>Gene Name</b>	AMCase
<b>Alternative Names</b>	CHIT2; AMCASE; TSA1902
<b>Gene ID</b>	27159
<b>SwissProt ID</b>	Q9BZP6
<b>Immunogen</b>	Recombinant protein of human AMCase

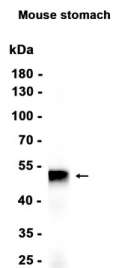
**Background**

The protein encoded by this gene degrades chitin, which is found in the cell wall of most fungi as well as in arthropods and some nematodes. The encoded protein can also stimulate interleukin 13 expression, and variations in this gene can lead to

asthma susceptibility. Several transcript variants encoding a few different isoforms have been found for this gene. [provided by RefSeq, Apr 2012]

## Research Area

## Image Data



Western blot analysis of extracts from Mouse stomach tissue using AMCase Rabbit Monoclonal Antibody at 1:1000.