
Product Name: Myoglobin Rabbit Monoclonal Antibody**Catalog #: AMRe86775**

For research use only.

Summary

Description	Recombinant rabbit monoclonal antibody
Host	Rabbit
Application	WB,IHC,ICC/IF
Reactivity	Human,Mouse,Rat
Conjugation	Unconjugated
Modification	Unmodified
Isotype	IgG
Clonality	Monoclonal
Form	Liquid
Concentration	
Storage	Aliquot and store at -20°C (valid for 12 months). Avoid freeze/thaw cycles.
Shipping	Ice bags
Buffer	Supplied in 50mM Tris-Glycine(pH 7.4), 0.15M NaCl, 40% Glycerol, 0.01% sodium azide and 0.05% protective protein. Stable for 12 months from date of receipt.
Purification	Affinity Purification

Application

Dilution Ratio	WB 1:1000-1:5000,IHC 1:200-1:500,ICC/IF 1:20-1:200
Molecular Weight	Calculated MW:17 kDa; Observed MW:17 kDa

Antigen Information

Gene Name	Myoglobin
Alternative Names	PVALB; myoglobin
Gene ID	4151
SwissProt ID	P02144
Immunogen	A synthetic peptide of human Myoglobin

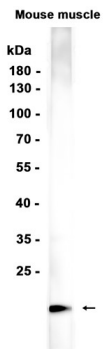
Background

This gene encodes a member of the globin superfamily and is expressed in skeletal and cardiac muscles. The encoded protein is a haemoprotein contributing to intracellular oxygen storage and transcellular facilitated diffusion of oxygen. At least three

alternatively spliced transcript variants encoding the same protein have been reported. [provided by RefSeq, Jul 2008]

Research Area

Image Data



Western blot analysis of extracts from Mouse muscle tissue using Myoglobin Rabbit Monoclonal Antibody at 1:1000.