

Product Name: TMS1 Rabbit Monoclonal Antibody**Catalog #: AMRe86764**

For research use only.

Summary

Description	Recombinant rabbit monoclonal antibody
Host	Rabbit
Application	WB,IP
Reactivity	Human
Conjugation	Unconjugated
Modification	Unmodified
Isotype	IgG
Clonality	Monoclonal
Form	Liquid
Concentration	
Storage	Aliquot and store at -20°C (valid for 12 months). Avoid freeze/thaw cycles.
Shipping	Ice bags
Buffer	Supplied in 50mM Tris-Glycine(pH 7.4), 0.15M NaCl, 40% Glycerol, 0.01% sodium azide and 0.05% protective protein. Stable for 12 months from date of receipt.
Purification	Affinity Purification

Application

Dilution Ratio	WB 1:1000-1:5000,IP 1:10-1:100
Molecular Weight	Calculated MW:22 kDa; Observed MW:22 kDa

Antigen Information

Gene Name	TMS1
Alternative Names	ASC; TMS; TMS1; CARD5; TMS-1
Gene ID	29108
SwissProt ID	Q9ULZ3
Immunogen	A synthetic peptide of human TMS1

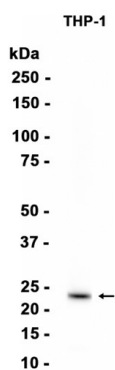
Background

This gene encodes an adaptor protein that is composed of two protein-protein interaction domains: a N-terminal PYRIN-PAAD-DAPIN domain (PYD) and a C-terminal caspase-recruitment domain (CARD). The PYD and CARD domains are members

of the six-helix bundle death domain-fold superfamily that mediates assembly of large signaling complexes in the inflammatory and apoptotic signaling pathways via the activation of caspase. In normal cells, this protein is localized to the cytoplasm; however, in cells undergoing apoptosis, it forms ball-like aggregates near the nuclear periphery. Two transcript variants encoding different isoforms have been found for this gene. [provided by RefSeq, Jul 2008]

Research Area

Image Data



Western blot analysis of extracts from THP-1 cells using TMS1 Rabbit Monoclonal Antibody at 1:1000.