

Product Name: IGF1 Rabbit Monoclonal Antibody**Catalog #: AMRe86761**

For research use only.

Summary

Description	Recombinant rabbit monoclonal antibody
Host	Rabbit
Application	WB
Reactivity	Human
Conjugation	Unconjugated
Modification	Unmodified
Isotype	IgG
Clonality	Monoclonal
Form	Liquid
Concentration	
Storage	Aliquot and store at -20°C (valid for 12 months). Avoid freeze/thaw cycles.
Shipping	Ice bags
Buffer	Supplied in 50mM Tris-Glycine(pH 7.4), 0.15M NaCl, 40% Glycerol, 0.01% sodium azide and 0.05% protective protein. Stable for 12 months from date of receipt.
Purification	Affinity Purification

Application

Dilution Ratio	WB 1:2000-1:20000
Molecular Weight	Calculated MW:22 kDa; Observed MW:22 kDa

Antigen Information

Gene Name	IGF1
Alternative Names	MGF; IGFI; IGF-I
Gene ID	3479
SwissProt ID	P05019
Immunogen	A synthetic peptide of human IGF1

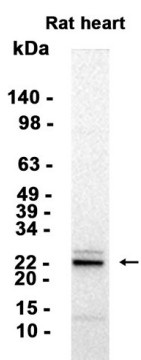
Background

The protein encoded by this gene is similar to insulin in function and structure and is a member of a family of proteins involved in mediating growth and development. The encoded protein is processed from a precursor, bound by a specific receptor, and

secreted. Defects in this gene are a cause of insulin-like growth factor I deficiency. Alternative splicing results in multiple transcript variants encoding different isoforms that may undergo similar processing to generate mature protein. [provided by RefSeq, Sep 2015]

Research Area

Image Data



Western blot analysis of extracts from Rat heart tissue using IGF1 Rabbit Monoclonal Antibody at 1:5000.