

**Product Name: LKB1 Rabbit Monoclonal Antibody****Catalog #: AMRe86759**

For research use only.

**Summary**

<b>Description</b>	Recombinant rabbit monoclonal antibody
<b>Host</b>	Rabbit
<b>Application</b>	WB,IP
<b>Reactivity</b>	Human
<b>Conjugation</b>	Unconjugated
<b>Modification</b>	Unmodified
<b>Isotype</b>	IgG
<b>Clonality</b>	Monoclonal
<b>Form</b>	Liquid
<b>Concentration</b>	
<b>Storage</b>	Aliquot and store at -20°C (valid for 12 months). Avoid freeze/thaw cycles.
<b>Shipping</b>	Ice bags
<b>Buffer</b>	Supplied in 50mM Tris-Glycine(pH 7.4), 0.15M NaCl, 40% Glycerol, 0.01% sodium azide and 0.05% protective protein. Stable for 12 months from date of receipt.
<b>Purification</b>	Affinity Purification

**Application**

<b>Dilution Ratio</b>	WB 1:500-1:2000,IP 1:50-1:200
<b>Molecular Weight</b>	Calculated MW:49 kDa; Observed MW:49 kDa

**Antigen Information**

<b>Gene Name</b>	LKB1
<b>Alternative Names</b>	PJS; LKB1; hLKB1
<b>Gene ID</b>	6794
<b>SwissProt ID</b>	Q15831
<b>Immunogen</b>	Recombinant protein of human LKB1

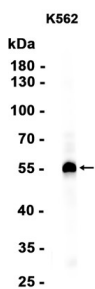
**Background**

This gene, which encodes a member of the serine/threonine kinase family, regulates cell polarity and functions as a tumor suppressor. Mutations in this gene have been associated with Peutz-Jeghers syndrome, an autosomal dominant disorder

characterized by the growth of polyps in the gastrointestinal tract, pigmented macules on the skin and mouth, and other neoplasms. Alternate transcriptional splice variants of this gene have been observed but have not been thoroughly characterized. [provided by RefSeq, Jul 2008]

## Research Area

## Image Data



Western blot analysis of extracts from K562 cells using LKB1 Rabbit Monoclonal Antibody at 1:100.