

Product Name: SART1 Rabbit Monoclonal Antibody**Catalog #: AMRe86758**

For research use only.

Summary

Description	Recombinant rabbit monoclonal antibody
Host	Rabbit
Application	WB, ICC/IF, FC
Reactivity	Human, Mouse, Rat
Conjugation	Unconjugated
Modification	Unmodified
Isotype	IgG
Clonality	Monoclonal
Form	Liquid
Concentration	
Storage	Aliquot and store at -20°C (valid for 12 months). Avoid freeze/thaw cycles.
Shipping	Ice bags
Buffer	Supplied in 50mM Tris-Glycine (pH 7.4), 0.15M NaCl, 40% Glycerol, 0.01% sodium azide and 0.05% protective protein. Stable for 12 months from date of receipt.
Purification	Affinity Purification

Application

Dilution Ratio	WB 1:2000-1:20000, ICC/IF 1:100-1:200, FC 1:50-1:200
Molecular Weight	Calculated MW: 90 kDa; Observed MW: 120 kDa

Antigen Information

Gene Name	SART1
Alternative Names	HAF; Ara1; HOMS1; Snu66; SART1259; SNRNP110
Gene ID	9092
SwissProt ID	O43290
Immunogen	A synthetic peptide of human SART1

Background

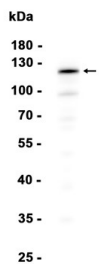
This gene encodes two proteins, the SART1(800) protein expressed in the nucleus of the majority of proliferating cells, and the SART1(259) protein expressed in the cytosol of epithelial cancers. The SART1(259) protein is translated by the mechanism of -1

frameshifting during posttranscriptional regulation; its full-length sequence is not published yet. The two encoded proteins are thought to be involved in the regulation of proliferation. Both proteins have tumor-rejection antigens. The SART1(259) protein possesses tumor epitopes capable of inducing HLA-A2402-restricted cytotoxic T lymphocytes in cancer patients. This SART1(259) antigen may be useful in specific immunotherapy for cancer patients and may serve as a paradigmatic tool for the diagnosis and treatment of patients with atopy. The SART1(259) protein is found to be essential for the recruitment of the tri-snRNP to the pre-spliceosome in the spliceosome assembly pathway. [provided by RefSeq, Jul 2008]

Research Area

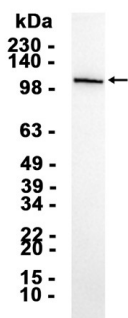
Image Data

Mouse testis



Western blot analysis of extracts from Mouse testis tissue using SART1 Rabbit Monoclonal Antibody at 1:1000.

HeLa



Western blot analysis of extracts from HeLa cells using AMRe86758 at 1:5000.