
Product Name: Sca1/Ly6A/E Rabbit Monoclonal Antibody**Catalog #: AMRe86755**

For research use only.

Summary

Description	Recombinant rabbit monoclonal antibody
Host	Rabbit
Application	WB,IHC
Reactivity	Mouse
Conjugation	Unconjugated
Modification	Unmodified
Isotype	IgG
Clonality	Monoclonal
Form	Liquid
Concentration	
Storage	Aliquot and store at -20°C (valid for 12 months). Avoid freeze/thaw cycles.
Shipping	Ice bags
Buffer	Supplied in 50mM Tris-Glycine(pH 7.4), 0.15M NaCl, 40% Glycerol, 0.01% sodium azide and 0.05% protective protein. Stable for 12 months from date of receipt.
Purification	Affinity Purification

Application

Dilution Ratio	WB 1:1000-1:5000,IHC 1:100-1:200
Molecular Weight	Calculated MW:14 kDa; Observed MW:18 kDa

Antigen Information

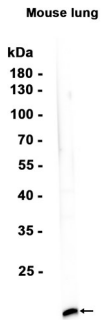
Gene Name	Sca1/Ly6A/E
Alternative Names	TAP; Sca1; Sca-1; Ly-6A.2; Ly-6A/E; Ly-6E.1
Gene ID	110454
SwissProt ID	P05533
Immunogen	A synthetic peptide of mouse Sca1

Background

T-cell activation.

Research Area

Image Data



Western blot analysis of extracts from Mouse lung tissue using Sca1/Ly6A/E Rabbit Monoclonal Antibody at 1:1000.