

---

**Product Name: ATG9A Rabbit Monoclonal Antibody****Catalog #: AMRe86752**

For research use only.

**Summary**

<b>Description</b>	Recombinant rabbit monoclonal antibody
<b>Host</b>	Rabbit
<b>Application</b>	WB,IHC,ICC/IF,FC,IP
<b>Reactivity</b>	Human,Mouse,Rat
<b>Conjugation</b>	Unconjugated
<b>Modification</b>	Unmodified
<b>Isotype</b>	IgG
<b>Clonality</b>	Monoclonal
<b>Form</b>	Liquid
<b>Concentration</b>	
<b>Storage</b>	Aliquot and store at -20°C (valid for 12 months). Avoid freeze/thaw cycles.
<b>Shipping</b>	Ice bags
<b>Buffer</b>	Supplied in 50mM Tris-Glycine(pH 7.4), 0.15M NaCl, 40% Glycerol, 0.01% sodium azide and 0.05% protective protein. Stable for 12 months from date of receipt.
<b>Purification</b>	Affinity Purification

**Application**

<b>Dilution Ratio</b>	WB 1:500-1:2000,IHC 1:50-1:100,ICC/IF 1:50-1:100,FC 1:20-1:50,IP 1:10-1:100
<b>Molecular Weight</b>	Calculated MW:95 kDa; Observed MW:100-110 kDa

**Antigen Information**

<b>Gene Name</b>	ATG9A
<b>Alternative Names</b>	mATG9; APG9L1; MGD3208
<b>Gene ID</b>	79065
<b>SwissProt ID</b>	Q7Z3C6
<b>Immunogen</b>	A synthetic peptide of human ATG9A

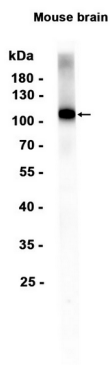
**Background**

Involved in autophagy and cytoplasm to vacuole transport (Cvt) vesicle formation. Plays a key role in the organization of the preautophagosomal structure/phagophore assembly site (PAS), the nucleating site for formation of the sequestering vesicle.

Cycles between a juxta-nuclear trans-Golgi network compartment and late endosomes. Nutrient starvation induces accumulation on autophagosomes. Starvation-dependent trafficking requires ULK1, ATG13 and SUPT20H.

## Research Area

## Image Data



Western blot analysis of extracts from Mouse brain tissue using ATG9A Rabbit Monoclonal Antibody at 1:1000.