

---

**Product Name: CD163 Rabbit Monoclonal Antibody****Catalog #: AMRe86751**

For research use only.

**Summary**

<b>Description</b>	Recombinant rabbit monoclonal antibody
<b>Host</b>	Rabbit
<b>Application</b>	WB,IHC,FC
<b>Reactivity</b>	Human,Mouse,Rat
<b>Conjugation</b>	Unconjugated
<b>Modification</b>	Unmodified
<b>Isotype</b>	IgG
<b>Clonality</b>	Monoclonal
<b>Form</b>	Liquid
<b>Concentration</b>	
<b>Storage</b>	Aliquot and store at -20°C (valid for 12 months). Avoid freeze/thaw cycles.
<b>Shipping</b>	Ice bags
<b>Buffer</b>	Supplied in 50mM Tris-Glycine(pH 7.4), 0.15M NaCl, 40% Glycerol, 0.01% sodium azide and 0.05% protective protein. Stable for 12 months from date of receipt.
<b>Purification</b>	Affinity Purification

**Application**

<b>Dilution Ratio</b>	WB 1:500-1:2000,IHC 1:200-1:500,FC 1:50-1:100
<b>Molecular Weight</b>	Calculated MW:126 kDa; Observed MW:150 kDa

**Antigen Information**

<b>Gene Name</b>	CD163
<b>Alternative Names</b>	CD163v2; CD163v3
<b>Gene ID</b>	93671
<b>SwissProt ID</b>	Q2VLH6
<b>Immunogen</b>	Recombinant protein of mouse CD163

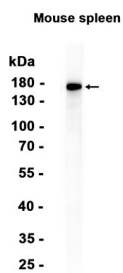
**Background**

Involved in clearance and endocytosis of hemoglobin/haptoglobin complexes by macrophages and may thereby protect tissues from free hemoglobin-mediated oxidative damage. May play a role in the uptake and recycling of iron, via endocytosis

of hemoglobin/haptoglobin and subsequent breakdown of heme. Binds hemoglobin/haptoglobin complexes in a calcium-dependent and pH-dependent manner. Induces a cascade of intracellular signals that involves tyrosine kinase-dependent calcium mobilization, inositol triphosphate production and secretion of IL6 and CSF1 (By similarity).

## Research Area

## Image Data



Western blot analysis of extracts from Mouse spleen tissue using CD163 Rabbit Monoclonal Antibody at 1:1000.