

**Product Name: Smoothelin Rabbit Monoclonal Antibody**  
**Catalog #: AMRe86750**

---

## Summary

<b>Production Name</b>	Smoothelin Rabbit Monoclonal Antibody
<b>Description</b>	Rabbit Monoclonal antibody
<b>Host</b>	Rabbit
<b>Application</b>	WB, IHC-P
<b>Reactivity</b>	Human,Mouse,Rat

## Performance

<b>Conjugation</b>	Unconjugated
<b>Modification</b>	Unmodified
<b>Isotype</b>	IgG
<b>Clonality</b>	Monoclonal
<b>Form</b>	Liquid
<b>Storage</b>	Store at 4°C short term. Aliquot and store at -20°C long term. Avoid freeze/thaw cycles.
<b>Buffer</b>	Supplied in 50mM Tris-Glycine(pH 7.4), 0.15M NaCl, 40% Glycerol, 0.01% sodium azide and 0.05% protective protein. Stable for 12 months from date of receipt.
<b>Purification</b>	Affinity Purification

## Immunogen

<b>Gene Name</b>	Smoothelin
<b>Alternative Names</b>	SMTN; SMSMO
<b>Gene ID</b>	6525
<b>SwissProt ID</b>	P53814.

## Application

<b>Dilution Ratio</b>	WB: 1:1000 IHC-P: 1:1000-1:5000
<b>Molecular Weight</b>	Calculated MW:99 kDa; Observed MW:110,59 kDa

## Background

This gene encodes a structural protein that is found exclusively in contractile smooth muscle cells. It associates with stress

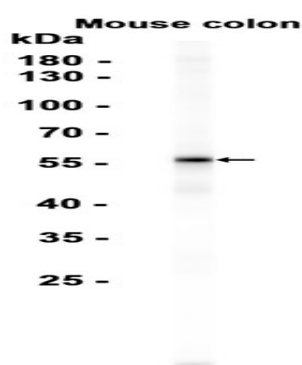
**Product Name: Smoothelin Rabbit Monoclonal Antibody**  
**Catalog #: AMRe86750**

---

fibers and constitutes part of the cytoskeleton. This gene is localized to chromosome 22q12.3, distal to the TUPLE1 locus and outside the DiGeorge syndrome deletion. Alternative splicing of this gene results in multiple transcript variants encoding distinct isoforms. [provided by RefSeq, May 2011]

## Research Area

## Image Data



Western blot analysis of extracts from Mouse colon tissue using AMRe86750 at 1:1000.

## Note

For research use only.