

---

**Product Name: Albumin Rabbit Monoclonal Antibody****Catalog #: AMRe86741**

For research use only.

**Summary**

<b>Description</b>	Recombinant rabbit monoclonal antibody
<b>Host</b>	Rabbit
<b>Application</b>	WB,ICC/IF,FC,IP
<b>Reactivity</b>	Human,Mouse,Rat
<b>Conjugation</b>	Unconjugated
<b>Modification</b>	Unmodified
<b>Isotype</b>	IgG
<b>Clonality</b>	Monoclonal
<b>Form</b>	Liquid
<b>Concentration</b>	
<b>Storage</b>	Aliquot and store at -20°C (valid for 12 months). Avoid freeze/thaw cycles.
<b>Shipping</b>	Ice bags
<b>Buffer</b>	Supplied in 50mM Tris-Glycine(pH 7.4), 0.15M NaCl, 40% Glycerol, 0.01% sodium azide and 0.05% protective protein. Stable for 12 months from date of receipt.
<b>Purification</b>	Affinity Purification

**Application**

<b>Dilution Ratio</b>	WB 1:500-1:2000,ICC/IF 1:200-1:500,FC 1:200-1:500,IP 1:20-1:50
<b>Molecular Weight</b>	Calculated MW:69 kDa; Observed MW:69 kDa

**Antigen Information**

<b>Gene Name</b>	Albumin
<b>Alternative Names</b>	HSA; PRO0883; PRO0903; PRO1341
<b>Gene ID</b>	213
<b>SwissProt ID</b>	P02768
<b>Immunogen</b>	Recombinant protein of human Albumin

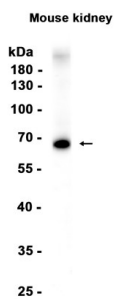
**Background**

This gene encodes the most abundant protein in human blood. This protein functions in the regulation of blood plasma colloid osmotic pressure and acts as a carrier protein for a wide range of endogenous molecules including hormones, fatty acids, and

metabolites, as well as exogenous drugs. Additionally, this protein exhibits an esterase-like activity with broad substrate specificity. The encoded preproprotein is proteolytically processed to generate the mature protein. A peptide derived from this protein, EPI-X4, is an endogenous inhibitor of the CXCR4 chemokine receptor. [provided by RefSeq, Jul 2016]

## Research Area

## Image Data



Western blot analysis of extracts from Mouse kidney tissue using Albumin Rabbit Monoclonal Antibody at 1:1000.