

Product Name: MSI2 Rabbit Monoclonal Antibody**Catalog #: AMRe86740**

For research use only.

Summary

Description	Recombinant rabbit monoclonal antibody
Host	Rabbit
Application	WB,IHC,ICC/IF,FC,IP
Reactivity	Human,Mouse,Rat
Conjugation	Unconjugated
Modification	Unmodified
Isotype	IgG
Clonality	Monoclonal
Form	Liquid
Concentration	
Storage	Aliquot and store at -20°C (valid for 12 months). Avoid freeze/thaw cycles.
Shipping	Ice bags
Buffer	Supplied in 50mM Tris-Glycine(pH 7.4), 0.15M NaCl, 40% Glycerol, 0.01% sodium azide and 0.05% protective protein. Stable for 12 months from date of receipt.
Purification	Affinity Purification

Application

Dilution Ratio	WB 1:500-1:2000,IHC 1:200-1:500,ICC/IF 1:100-1:200,FC 1:50-1:200,IP 1:50-1:100
Molecular Weight	Calculated MW:35 kDa; Observed MW:35 kDa

Antigen Information

Gene Name	MSI2
Alternative Names	MSI2H
Gene ID	124540
SwissProt ID	Q96DH6
Immunogen	A synthetic peptide of human MSI2

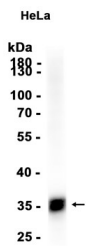
Background

This gene encodes an RNA-binding protein that is a member of the Musashi protein family. The encoded protein is transcriptional regulator that targets genes involved in development and cell cycle regulation. Mutations in this gene are

associated with poor prognosis in certain types of cancers. This gene has also been shown to be rearranged in certain cancer cells. [provided by RefSeq, Apr 2016]

Research Area

Image Data



Western blot analysis of extracts from HeLa cells using MSI2 Rabbit Monoclonal Antibody at 1:1000.