
Product Name: SIRT1 Rabbit Monoclonal Antibody**Catalog #: AMRe86728**

For research use only.

Summary

Description	Recombinant rabbit monoclonal antibody
Host	Rabbit
Application	WB,IHC,ICC/IF,FC,IP
Reactivity	Human
Conjugation	Unconjugated
Modification	Unmodified
Isotype	IgG
Clonality	Monoclonal
Form	Liquid
Concentration	
Storage	Aliquot and store at -20°C (valid for 12 months). Avoid freeze/thaw cycles.
Shipping	Ice bags
Buffer	Supplied in 50mM Tris-Glycine(pH 7.4), 0.15M NaCl, 40% Glycerol, 0.01% sodium azide and 0.05% protective protein. Stable for 12 months from date of receipt.
Purification	Affinity Purification

Application

Dilution Ratio	WB 1:2000-1:20000,IHC 1:100-1:200,ICC/IF 1:100-1:200,FC 1:100-1:200,IP 1:20-1:50
Molecular Weight	Calculated MW:82 kDa; Observed MW:120 kDa

Antigen Information

Gene Name	SIRT1
Alternative Names	SIR2; SIR2L1; SIR2alpha
Gene ID	23411
SwissProt ID	Q96EB6
Immunogen	A synthetic peptide of human SIRT1

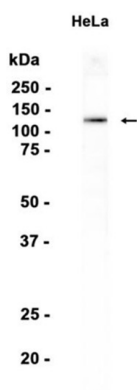
Background

This gene encodes a member of the sirtuin family of proteins, homologs to the yeast Sir2 protein. Members of the sirtuin family are characterized by a sirtuin core domain and grouped into four classes. The functions of human sirtuins have not yet been

determined; however, yeast sirtuin proteins are known to regulate epigenetic gene silencing and suppress recombination of rDNA. Studies suggest that the human sirtuins may function as intracellular regulatory proteins with mono-ADP-ribosyltransferase activity. The protein encoded by this gene is included in class I of the sirtuin family. Alternative splicing results in multiple transcript variants. [provided by RefSeq, Dec 2008]

Research Area

Image Data



Western blot analysis of extracts from HeLa cells using SIRT1 Rabbit Monoclonal Antibody at 1:1000.