

---

**Product Name: SDHC Rabbit Monoclonal Antibody****Catalog #: AMRe86726**

For research use only.

**Summary**

<b>Description</b>	Recombinant rabbit monoclonal antibody
<b>Host</b>	Rabbit
<b>Application</b>	WB,IHC
<b>Reactivity</b>	Human,Mouse,Rat
<b>Conjugation</b>	Unconjugated
<b>Modification</b>	Unmodified
<b>Isotype</b>	IgG
<b>Clonality</b>	Monoclonal
<b>Form</b>	Liquid
<b>Concentration</b>	
<b>Storage</b>	Aliquot and store at -20°C (valid for 12 months). Avoid freeze/thaw cycles.
<b>Shipping</b>	Ice bags
<b>Buffer</b>	Supplied in 50mM Tris-Glycine(pH 7.4), 0.15M NaCl, 40% Glycerol, 0.01% sodium azide and 0.05% protective protein. Stable for 12 months from date of receipt.
<b>Purification</b>	Affinity Purification

**Application**

<b>Dilution Ratio</b>	WB 1:1000-1:5000,IHC 1:200-1:500
<b>Molecular Weight</b>	Calculated MW:19 kDa; Observed MW:19 kDa

**Antigen Information**

<b>Gene Name</b>	SDHC
<b>Alternative Names</b>	CYBL; PGL3; QPS1; SDH3; CYB560
<b>Gene ID</b>	6391
<b>SwissProt ID</b>	Q99643
<b>Immunogen</b>	A synthetic peptide of human SDHC

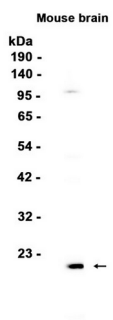
**Background**

This gene encodes one of four nuclear-encoded subunits that comprise succinate dehydrogenase, also known as mitochondrial complex II, a key enzyme complex of the tricarboxylic acid cycle and aerobic respiratory chains of mitochondria. The encoded

protein is one of two integral membrane proteins that anchor other subunits of the complex, which form the catalytic core, to the inner mitochondrial membrane. There are several related pseudogenes for this gene on different chromosomes. Mutations in this gene have been associated with paragangliomas. Alternatively spliced transcript variants have been described. [provided by RefSeq, May 2013]

## Research Area

## Image Data



Western blot analysis of extracts from Mouse brain tissue using SDHC Rabbit Monoclonal Antibody at 1:1000.