
Product Name: GATA2 Rabbit Monoclonal Antibody**Catalog #: AMRe86722**

For research use only.

Summary

Description	Recombinant rabbit monoclonal antibody
Host	Rabbit
Application	WB,IP
Reactivity	Human,Mouse,Rat
Conjugation	Unconjugated
Modification	Unmodified
Isotype	IgG
Clonality	Monoclonal
Form	Liquid
Concentration	
Storage	Aliquot and store at -20°C (valid for 12 months). Avoid freeze/thaw cycles.
Shipping	Ice bags
Buffer	Supplied in 50mM Tris-Glycine(pH 7.4), 0.15M NaCl, 40% Glycerol, 0.01% sodium azide and 0.05% protective protein. Stable for 12 months from date of receipt.
Purification	Affinity Purification

Application

Dilution Ratio	WB 1:500-1:2000,IP 1:20-1:50
Molecular Weight	Calculated MW:51 kDa; Observed MW:51 kDa

Antigen Information

Gene Name	GATA2
Alternative Names	DCML; IMD21; NFE1B; MONOMAC
Gene ID	2624
SwissProt ID	P23769
Immunogen	A synthetic peptide of human GATA2

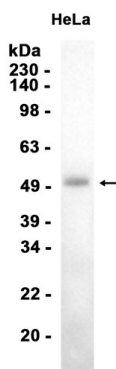
Background

This gene encodes a member of the GATA family of zinc-finger transcription factors that are named for the consensus nucleotide sequence they bind in the promoter regions of target genes. The encoded protein plays an essential role in

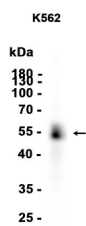
regulating transcription of genes involved in the development and proliferation of hematopoietic and endocrine cell lineages. Alternative splicing results in multiple transcript variants.[provided by RefSeq, Mar 2009]

Research Area

Image Data



Western blot analysis of extracts from HeLa cells using GATA2 Rabbit Monoclonal Antibody at 1:2000.



Western blot analysis of extracts from K562 cells using AMRe86722 at 1:1000.