

Product Name: CrkL Rabbit Monoclonal Antibody
Catalog #: AMRe86720



Summary

Production Name	CrkL Rabbit Monoclonal Antibody
Description	Rabbit Monoclonal antibody
Host	Rabbit
Application	WB,IHC-P,ICC/IF,FC,IP
Reactivity	Human,Mouse,Rat

Performance

Conjugation	Unconjugated
Modification	Unmodified
Isotype	IgG
Clonality	Monoclonal
Form	Liquid
Storage	Store at 4°C short term. Aliquot and store at -20°C long term. Avoid freeze/thaw cycles.
Buffer	Supplied in 50mM Tris-Glycine(pH 7.4), 0.15M NaCl, 40% Glycerol, 0.01% sodium azide and 0.05% protective protein. Stable for 12 months from date of receipt.
Purification	Affinity Purification

Immunogen

Gene Name	CrkL
Alternative Names	Crk-like protein
Gene ID	1399
SwissProt ID	P46109.

Application

Dilution Ratio	WB: 1:1000 IHC-P: 1:100 ICC/IF: 1:50 FC: 1:20 IP: 1:50
Molecular Weight	Calculated MW:34 kDa; Observed MW:39 kDa

Background

This gene encodes a protein kinase containing SH2 and SH3 (src homology) domains which has been shown to activate the

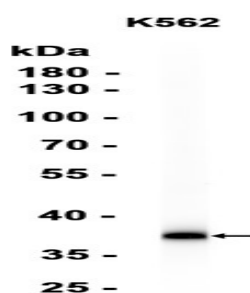
Product Name: CrkL Rabbit Monoclonal Antibody
Catalog #: AMRe86720



RAS and JUN kinase signaling pathways and transform fibroblasts in a RAS-dependent fashion. It is a substrate of the BCR-ABL tyrosine kinase, plays a role in fibroblast transformation by BCR-ABL, and may be oncogenic.[provided by RefSeq, Jan 2009]

Research Area

Image Data



Western blot analysis of extracts from K562 cells using AMRe86720 at 1:100.

Note

For research use only.