

Product Name: DKK1 Rabbit Monoclonal Antibody**Catalog #: AMRe86718**

For research use only.

Summary

Description	Recombinant rabbit monoclonal antibody
Host	Rabbit
Application	WB,IHC
Reactivity	Human
Conjugation	Unconjugated
Modification	Unmodified
Isotype	IgG
Clonality	Monoclonal
Form	Liquid
Concentration	
Storage	Aliquot and store at -20°C (valid for 12 months). Avoid freeze/thaw cycles.
Shipping	Ice bags
Buffer	Supplied in 50mM Tris-Glycine(pH 7.4), 0.15M NaCl, 40% Glycerol, 0.01% sodium azide and 0.05% protective protein. Stable for 12 months from date of receipt.
Purification	Affinity Purification

Application

Dilution Ratio	WB 1:1000-1:5000,IHC 1:200-1:1000
Molecular Weight	Calculated MW:29 kDa; Observed MW:28-40 kDa

Antigen Information

Gene Name	DKK1
Alternative Names	SK; DKK-1
Gene ID	22943
SwissProt ID	O94907
Immunogen	A synthetic peptide of human DKK1

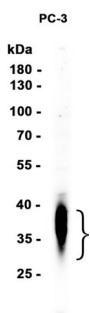
Background

This gene encodes a member of the dickkopf family of proteins. Members of this family are secreted proteins characterized by two cysteine-rich domains that mediate protein-protein interactions. The encoded protein binds to the LRP6 co-receptor and

inhibits beta-catenin-dependent Wnt signaling. This gene plays a role in embryonic development and may be important in bone formation in adults. Elevated expression of this gene has been observed in numerous human cancers and this protein may promote proliferation, invasion and growth in cancer cell lines. [provided by RefSeq, Sep 2017]

Research Area

Image Data



Western blot analysis of extracts from PC-3 cells using DKK1 Rabbit Monoclonal Antibody at 1:1000.