

Product Name: SCRIBBLE Rabbit Monoclonal Antibody**Catalog #: AMRe86716**

For research use only.

Summary

Description	Recombinant rabbit monoclonal antibody
Host	Rabbit
Application	WB,FC
Reactivity	Human
Conjugation	Unconjugated
Modification	Unmodified
Isotype	IgG
Clonality	Monoclonal
Form	Liquid
Concentration	
Storage	Aliquot and store at -20°C (valid for 12 months). Avoid freeze/thaw cycles.
Shipping	Ice bags
Buffer	Supplied in 50mM Tris-Glycine(pH 7.4), 0.15M NaCl, 40% Glycerol, 0.01% sodium azide and 0.05% protective protein. Stable for 12 months from date of receipt.
Purification	Affinity Purification

Application

Dilution Ratio	WB 1:1000-1:5000,FC 1:100-1:500
Molecular Weight	Calculated MW:175 kDa; Observed MW:240 kDa

Antigen Information

Gene Name	SCRIBBLE
Alternative Names	CRIB1; SCRB1; SCRIB1; Vartul
Gene ID	23513
SwissProt ID	Q14160
Immunogen	A synthetic peptide of human SCRIBBLE

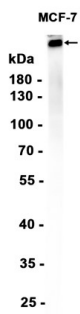
Background

This gene encodes a protein that was identified as being similar to the Drosophila scribble protein. The mammalian protein is involved in tumor suppression pathways. As a scaffold protein involved in cell polarization processes, this protein binds to

many other proteins. The encoded protein binds to papillomavirus E6 protein via its PDZ domain and the C-terminus of E6. Two alternatively spliced transcript variants that encode different protein isoforms have been found for this gene. [provided by RefSeq, Nov 2011]

Research Area

Image Data



Western blot analysis of extracts from MCF-7 cells using SCRIBBLE Rabbit Monoclonal Antibody at 1:1000.