

---

**Product Name: Glutamate receptor 3 Rabbit Monoclonal Antibody****Catalog #: AMRe86713**

For research use only.

**Summary**

<b>Description</b>	Recombinant rabbit monoclonal antibody
<b>Host</b>	Rabbit
<b>Application</b>	WB
<b>Reactivity</b>	Human, Mouse, Rat
<b>Conjugation</b>	Unconjugated
<b>Modification</b>	Unmodified
<b>Isotype</b>	IgG
<b>Clonality</b>	Monoclonal
<b>Form</b>	Liquid
<b>Concentration</b>	
<b>Storage</b>	Aliquot and store at -20°C (valid for 12 months). Avoid freeze/thaw cycles.
<b>Shipping</b>	Ice bags
<b>Buffer</b>	Supplied in 50mM Tris-Glycine (pH 7.4), 0.15M NaCl, 40% Glycerol, 0.01% sodium azide and 0.05% protective protein. Stable for 12 months from date of receipt.
<b>Purification</b>	Affinity Purification

**Application**

<b>Dilution Ratio</b>	WB 1:1000-1:5000
<b>Molecular Weight</b>	Calculated MW:101 kDa; Observed MW:101 kDa

**Antigen Information**

<b>Gene Name</b>	Glutamate receptor 3
<b>Alternative Names</b>	GLUR3; GLURC; GluA3; MRX94; GLUR-C; GLUR-K3
<b>Gene ID</b>	2892
<b>SwissProt ID</b>	P42263
<b>Immunogen</b>	A synthetic peptide of human Glutamate receptor 3

**Background**

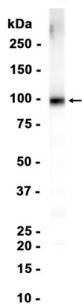
Glutamate receptors are the predominant excitatory neurotransmitter receptors in the mammalian brain and are activated in a variety of normal neurophysiologic processes. These receptors are heteromeric protein complexes composed of multiple

subunits, arranged to form ligand-gated ion channels. The classification of glutamate receptors is based on their activation by different pharmacologic agonists. The subunit encoded by this gene belongs to a family of AMPA (alpha-amino-3-hydroxy-5-methyl-4-isoxazole propionate)-sensitive glutamate receptors, and is subject to RNA editing (AGA->GGA; R->G). Alternative splicing at this locus results in different isoforms, which may vary in their signal transduction properties. [provided by RefSeq, Jul 2008]

## Research Area

## Image Data

Human hippocampus



Western blot analysis of extracts from Human hippocampus tissue using Glutamate receptor 3 Rabbit Monoclonal Antibody at 1:1000.