

---

**Product Name: Calcineurin A Rabbit Monoclonal Antibody****Catalog #: AMRe86712**

For research use only.

**Summary**

<b>Description</b>	Recombinant rabbit monoclonal antibody
<b>Host</b>	Rabbit
<b>Application</b>	WB,ICC/IF,FC
<b>Reactivity</b>	Human,Mouse,Rat
<b>Conjugation</b>	Unconjugated
<b>Modification</b>	Unmodified
<b>Isotype</b>	IgG
<b>Clonality</b>	Monoclonal
<b>Form</b>	Liquid
<b>Concentration</b>	
<b>Storage</b>	Aliquot and store at -20°C (valid for 12 months). Avoid freeze/thaw cycles.
<b>Shipping</b>	Ice bags
<b>Buffer</b>	Supplied in 50mM Tris-Glycine(pH 7.4), 0.15M NaCl, 40% Glycerol, 0.01% sodium azide and 0.05% protective protein. Stable for 12 months from date of receipt.
<b>Purification</b>	Affinity Purification

**Application**

<b>Dilution Ratio</b>	WB 1:2000-1:20000,ICC/IF 1:100-1:200,FC 1:10-1:100
<b>Molecular Weight</b>	Calculated MW:59 kDa; Observed MW:59 kDa

**Antigen Information**

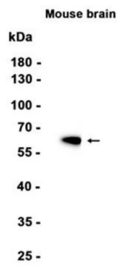
<b>Gene Name</b>	Calcineurin A
<b>Alternative Names</b>	CALN; CCN1; CNA1; CALNA; PPP2B; CALNA1
<b>Gene ID</b>	5530
<b>SwissProt ID</b>	Q08209
<b>Immunogen</b>	A synthetic peptide of human Calcineurin A

**Background**

Calcium-dependent, calmodulin-stimulated protein phosphatase. Many of the substrates contain a PxlxIT motif. This subunit may have a role in the calmodulin activation of calcineurin. Dephosphorylates DNM1L, HSPB1 and SSH1.

## Research Area

## Image Data



Western blot analysis of extracts from Mouse brain tissue using Calcineurin A Rabbit Monoclonal Antibody at 1:1000.