

Product Name: LC3B Rabbit Monoclonal Antibody**Catalog #: AMRe86710**

For research use only.

Summary

| | |
|----------------------|--|
| Description | Recombinant rabbit monoclonal antibody |
| Host | Rabbit |
| Application | WB,IHC,ICC/IF |
| Reactivity | Human, Mouse, Rat, Other |
| Conjugation | Unconjugated |
| Modification | Unmodified |
| Isotype | IgG |
| Clonality | Monoclonal |
| Form | Liquid |
| Concentration | 0.1mg/ml. The concentration of this product may be batch-dependent. |
| Storage | Aliquot and store at -20°C (valid for 12 months). Avoid freeze/thaw cycles. |
| Shipping | Ice bags |
| Buffer | Supplied in 50mM Tris-Glycine(pH 7.4), 0.15M NaCl, 40% Glycerol, 0.01% sodium azide and 0.05% protective protein. Stable for 12 months from date of receipt. |
| Purification | Affinity Purification |

Application

| | |
|-------------------------|---|
| Dilution Ratio | WB 1:1000-1:5000,IHC 1:500-1:2000,ICC/IF 1:500-1:2000 |
| Molecular Weight | Calculated MW:15 kDa; Observed MW:14,16 kDa |

Antigen Information

| | |
|--------------------------|--------------------------------------|
| Gene Name | LC3B |
| Alternative Names | LC3B; ATG8F; MAP1LC3B-a; MAP1A/1BLC3 |
| Gene ID | 81631, 67443, 64862 |
| SwissProt ID | Q9GZQ8, Q9CQV6, Q62625 |
| Immunogen | A synthetic peptide of human LC3B |

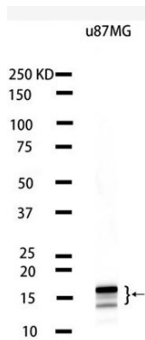
Background

The product of this gene is a subunit of neuronal microtubule-associated MAP1A and MAP1B proteins, which are involved in

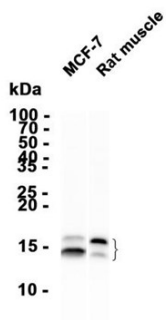
microtubule assembly and important for neurogenesis. Studies on the rat homolog implicate a role for this gene in autophagy, a process that involves the bulk degradation of cytoplasmic component. [provided by RefSeq, Jul 2008]

Research Area

Image Data



Western blot analysis of extracts from U-87 MG cells using LC3B Rabbit Monoclonal Antibody at 1:1000.



Western blot analysis of extracts from MCF-7 cells and Rat muscle tissue using AMRe86710 at 1:4000.