

---

**Product Name: Neutrophil Elastase Rabbit Monoclonal Antibody****Catalog #: AMRe86709**

For research use only.

**Summary**

<b>Description</b>	Recombinant rabbit monoclonal antibody
<b>Host</b>	Rabbit
<b>Application</b>	WB,IHC,ICC/IF,FC
<b>Reactivity</b>	Human
<b>Conjugation</b>	Unconjugated
<b>Modification</b>	Unmodified
<b>Isotype</b>	IgG
<b>Clonality</b>	Monoclonal
<b>Form</b>	Liquid
<b>Concentration</b>	0.09mg/ml. The concentration of this product may be batch-dependent.
<b>Storage</b>	Aliquot and store at -20°C (valid for 12 months). Avoid freeze/thaw cycles.
<b>Shipping</b>	Ice bags
<b>Buffer</b>	Supplied in 50mM Tris-Glycine(pH 7.4), 0.15M NaCl, 40% Glycerol, 0.01% sodium azide and 0.05% protective protein. Stable for 12 months from date of receipt.
<b>Purification</b>	Affinity Purification

**Application**

<b>Dilution Ratio</b>	WB 1:1000-1:5000,IHC 1:1000-1:5000,ICC/IF 1:50-1:100,FC 1:20-1:50
<b>Molecular Weight</b>	Calculated MW:29 kDa; Observed MW:29 kDa

**Antigen Information**

<b>Gene Name</b>	Neutrophil Elastase
<b>Alternative Names</b>	GE; NE; HLE; HNE; ELA2; SCN1; PMN-E
<b>Gene ID</b>	1991
<b>SwissProt ID</b>	P08246
<b>Immunogen</b>	A synthetic peptide of human Neutrophil Elastase

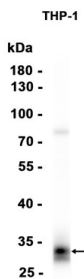
**Background**

Elastases form a subfamily of serine proteases that hydrolyze many proteins in addition to elastin. Humans have six elastase genes which encode structurally similar proteins. The encoded preproprotein is proteolytically processed to generate the active

protease. Following activation, this protease hydrolyzes proteins within specialized neutrophil lysosomes, called azurophil granules, as well as proteins of the extracellular matrix. The enzyme may play a role in degenerative and inflammatory diseases through proteolysis of collagen-IV and elastin. This protein also degrades the outer membrane protein A (OmpA) of *E. coli* as well as the virulence factors of such bacteria as *Shigella*, *Salmonella* and *Yersinia*. Mutations in this gene are associated with cyclic neutropenia and severe congenital neutropenia (SCN). This gene is present in a gene cluster on chromosome 19. [provided by RefSeq, Jan 2016]

## Research Area

## Image Data



Western blot analysis of extracts from THP-1 cells using Neutrophil Elastase Rabbit Monoclonal Antibody at 1:2000.