

---

**Product Name: Fibrinogen alpha chain Rabbit Monoclonal Antibody****Catalog #: AMRe86698**

For research use only.

**Summary**

<b>Description</b>	Recombinant rabbit monoclonal antibody
<b>Host</b>	Rabbit
<b>Application</b>	WB
<b>Reactivity</b>	Human
<b>Conjugation</b>	Unconjugated
<b>Modification</b>	Unmodified
<b>Isotype</b>	IgG
<b>Clonality</b>	Monoclonal
<b>Form</b>	Liquid
<b>Concentration</b>	
<b>Storage</b>	Aliquot and store at -20°C (valid for 12 months). Avoid freeze/thaw cycles.
<b>Shipping</b>	Ice bags
<b>Buffer</b>	Supplied in 50mM Tris-Glycine(pH 7.4), 0.15M NaCl, 40% Glycerol, 0.01% sodium azide and 0.05% protective protein. Stable for 12 months from date of receipt.
<b>Purification</b>	Affinity Purification

**Application**

<b>Dilution Ratio</b>	WB 1:1000-1:5000
<b>Molecular Weight</b>	Calculated MW:95 kDa; Observed MW:110 kDa

**Antigen Information**

<b>Gene Name</b>	Fibrinogen alpha chain
<b>Alternative Names</b>	Fib2
<b>Gene ID</b>	2243
<b>SwissProt ID</b>	P02671
<b>Immunogen</b>	A synthetic peptide of human Fibrinogen alpha chain

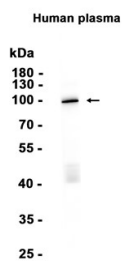
**Background**

This gene encodes the alpha subunit of the coagulation factor fibrinogen, which is a component of the blood clot. Following vascular injury, the encoded preproprotein is proteolytically processed by thrombin during the conversion of fibrinogen to

fibrin. Mutations in this gene lead to several disorders, including dysfibrinogenemia, hypofibrinogenemia, afibrinogenemia and renal amyloidosis. Alternative splicing results in multiple transcript variants, at least one of which encodes an isoform that undergoes proteolytic processing. [provided by RefSeq, Jan 2016]

## Research Area

## Image Data



Western blot analysis of extracts from Human plasma tissue using Fibrinogen alpha chain Rabbit Monoclonal Antibody at 1:1000.