

Product Name: Cathepsin D Rabbit Monoclonal Antibody**Catalog #: AMRe86678**

For research use only.

Summary

Description	Recombinant rabbit monoclonal antibody
Host	Rabbit
Application	WB,IHC,ICC/IF,FC,IP
Reactivity	Human, Mouse
Conjugation	Unconjugated
Modification	Unmodified
Isotype	IgG
Clonality	Monoclonal
Form	Liquid
Concentration	
Storage	Aliquot and store at -20°C (valid for 12 months). Avoid freeze/thaw cycles.
Shipping	Ice bags
Buffer	Supplied in 50mM Tris-Glycine(pH 7.4), 0.15M NaCl, 40% Glycerol, 0.01% sodium azide and 0.05% protective protein. Stable for 12 months from date of receipt.
Purification	Affinity Purification

Application

Dilution Ratio	WB 1:1000-1:2000,IHC 1:50-1:200,ICC/IF 1:100-1:200,FC 1:20-1:50,IP 1:20-1:50
Molecular Weight	Calculated MW:45 kDa; Observed MW:45,43,28 kDa

Antigen Information

Gene Name	Cathepsin D
Alternative Names	CPSD; CLN10; HEL-S-130P
Gene ID	1509
SwissProt ID	P07339
Immunogen	A synthetic peptide of human Cathepsin D

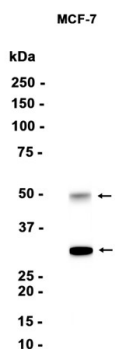
Background

This gene encodes a member of the A1 family of peptidases. The encoded preproprotein is proteolytically processed to generate multiple protein products. These products include the cathepsin D light and heavy chains, which heterodimerize to

form the mature enzyme. This enzyme exhibits pepsin-like activity and plays a role in protein turnover and in the proteolytic activation of hormones and growth factors. Mutations in this gene play a causal role in neuronal ceroid lipofuscinosis-10 and may be involved in the pathogenesis of several other diseases, including breast cancer and possibly Alzheimer's disease. [provided by RefSeq, Nov 2015]

Research Area

Image Data



Western blot analysis of extracts from MCF-7 cells using Cathepsin D Rabbit Monoclonal Antibody at 1:1000.