

---

**Product Name: Metabotropic Glutamate Receptor 5 Rabbit Monoclonal Antibody****Catalog #: AMRe86676**

For research use only.

**Summary**

<b>Description</b>	Recombinant rabbit monoclonal antibody
<b>Host</b>	Rabbit
<b>Application</b>	WB,IHC,FC
<b>Reactivity</b>	Human,Mouse,Rat
<b>Conjugation</b>	Unconjugated
<b>Modification</b>	Unmodified
<b>Isotype</b>	IgG
<b>Clonality</b>	Monoclonal
<b>Form</b>	Liquid
<b>Concentration</b>	
<b>Storage</b>	Aliquot and store at -20°C (valid for 12 months). Avoid freeze/thaw cycles.
<b>Shipping</b>	Ice bags
<b>Buffer</b>	Supplied in 50mM Tris-Glycine(pH 7.4), 0.15M NaCl, 40% Glycerol, 0.01% sodium azide and 0.05% protective protein. Stable for 12 months from date of receipt.
<b>Purification</b>	Affinity Purification

**Application**

<b>Dilution Ratio</b>	WB 1:1000-1:5000,IHC 1:200-1:500,FC 1:10-1:100
<b>Molecular Weight</b>	Calculated MW:132 kDa; Observed MW:150,300 kDa

**Antigen Information**

<b>Gene Name</b>	Metabotropic Glutamate Receptor 5
<b>Alternative Names</b>	mGlu5; GPRC1E; MGLUR5; PPP1R86
<b>Gene ID</b>	2915
<b>SwissProt ID</b>	P41594
<b>Immunogen</b>	A synthetic peptide of human Metabotropic Glutamate Receptor 5

**Background**

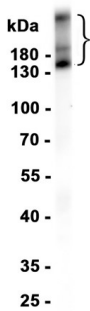
This gene encodes a member of the G-protein coupled receptor 3 protein family. The encoded protein is a metabotropic glutamate receptor, whose signaling activates a phosphatidylinositol-calcium second messenger system. This protein may be

involved in the regulation of neural network activity and synaptic plasticity. Glutamatergic neurotransmission is involved in most aspects of normal brain function and can be perturbed in many neuropathologic conditions. A pseudogene of this gene has been defined on chromosome 11. Alternative splicing results in multiple transcript variants. [provided by RefSeq, May 2014]

## Research Area

## Image Data

Mouse brain



Western blot analysis of extracts from Mouse brain tissue using Metabotropic Glutamate Receptor 5 Rabbit Monoclonal Antibody at 1:1000.