

**Product Name: PSMA Rabbit Monoclonal Antibody**  
**Catalog #: AMRe86671**



## Summary

<b>Production Name</b>	PSMA Rabbit Monoclonal Antibody
<b>Description</b>	Rabbit Monoclonal antibody
<b>Host</b>	Rabbit
<b>Application</b>	WB, IHC-P, IP
<b>Reactivity</b>	Human

## Performance

<b>Conjugation</b>	Unconjugated
<b>Modification</b>	Unmodified
<b>Isotype</b>	IgG
<b>Clonality</b>	Monoclonal
<b>Form</b>	Liquid
<b>Storage</b>	Store at 4°C short term. Aliquot and store at -20°C long term. Avoid freeze/thaw cycles.
<b>Buffer</b>	Supplied in 50mM Tris-Glycine(pH 7.4), 0.15M NaCl, 40% Glycerol, 0.01% sodium azide and 0.05% protective protein. Stable for 12 months from date of receipt.
<b>Purification</b>	Affinity Purification

## Immunogen

<b>Gene Name</b>	PSMA
<b>Alternative Names</b>	PSM; FGCP; FOLH; GCP2; PSMA; mGCP; GCPII; NAALAD1; NAALAdase
<b>Gene ID</b>	2346
<b>SwissProt ID</b>	Q04609.

## Application

<b>Dilution Ratio</b>	WB: 1:5000-1:50000 IHC-P: 1:200-1:500 IP: 1:10-1:100
<b>Molecular Weight</b>	Calculated MW:84 kDa; Observed MW:100 kDa

## Background

This gene encodes a type II transmembrane glycoprotein belonging to the M28 peptidase family. The protein acts as a

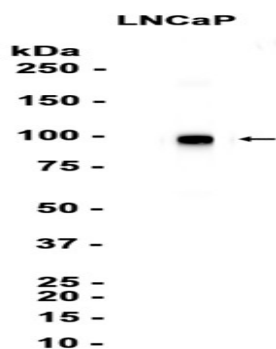
**Product Name: PSMA Rabbit Monoclonal Antibody**  
**Catalog #: AMRe86671**



glutamate carboxypeptidase on different alternative substrates, including the nutrient folate and the neuropeptide N-acetyl-L-aspartyl-L-glutamate and is expressed in a number of tissues such as prostate, central and peripheral nervous system and kidney. A mutation in this gene may be associated with impaired intestinal absorption of dietary folates, resulting in low blood folate levels and consequent hyperhomocysteinemia. Expression of this protein in the brain may be involved in a number of pathological conditions associated with glutamate excitotoxicity. In the prostate the protein is up-regulated in cancerous cells and is used as an effective diagnostic and prognostic indicator of prostate cancer. This gene likely arose from a duplication event of a nearby chromosomal region. Alternative splicing gives rise to multiple transcript variants encoding several different isoforms. [provided by RefSeq, Jul 2010]

## Research Area

## Image Data



Western blot analysis of extracts from LNCaP cells using AMRe86671 at 1:1000.

## Note

For research use only.